

**IN THIS ISSUE**

XIV International Congress Update.....	1
Track Research Impact.....	1
President's Message.....	2
Interviews with IS-MPMI Leadership.....	3
Why Do New Diseases Emerge?.....	6
Meet IS-MPMI Members.....	7
People.....	10
Employment.....	12
Welcome New Members.....	13
Recently Published Research in MPMI.....	14
Coming Events.....	16
IS-MPMI Directory.....	17
IS-MPMI BOD.....	32

**Look Inside for Directory**

Turn to page 17 to find colleagues in the molecular plant-microbe interaction field. Use the 2008 IS-MPMI Directory as a tool to reach experts in your field and make contacts throughout the world.

**IS-MPMI Reporter DEADLINE  
Deadline for submitting items  
for the next issue is  
August 15, 2008.**

Submission of materials as electronic files, on disk or as e-mail attachments, will speed processing. For information on submitting electronic images contact Joel Berg at [jberg@scisoc.org](mailto:jberg@scisoc.org).

**Send items to:**

Editor-in-Chief Sophien Kamoun  
John Innes Centre  
Sainsbury Laboratory  
Colney Lane  
Norwich NR4 7UH  
United Kingdom  
Phone: +44(0)1603 450410  
E-mail: [ismpmireportereditor@scisoc.org](mailto:ismpmireportereditor@scisoc.org)

**Bienvenue à Québec!  
XIV International Congress  
Update**

The organization of the XIV International Congress on Molecular Plant-Microbe Interactions is going well. To be held July 19–23, 2009, in Québec City, Canada, the congress will begin with a beautiful opening ceremony and continue with the scientific program including eight plenary and 14 concurrent sessions.

**Plenary Sessions**

- 1 - Pathogenic interactions
- 2 - Symbiotic interactions
- 3 - Common host mechanisms
- 4 - Signaling and molecular dialogues
- 5 - Dynamics of plant responses to microbes
- 6 - Plant-microbe interactions and technology transfer
- 7 - Ecology and evolution
- 8 - Plant immunity

**Confirmed Speakers**

The confirmed speakers for the 2009 Congress include **Luis Sequeira, Pierre de Wit, Sharon Long, Jonathan Jones, Brian Staskawicz, Erich Kombrink, Richard Bélanger,** and **Paul Schulze-Lefert.**

**Historic Québec**

The historic district of old Québec has been a UNESCO world heritage site since 1985 (<http://whc.unesco.org/en/list/300>).

**Social Events**

- Welcome reception—Cruise on the St.-Lawrence River on the Louis Jolliet ([www.croisieresaml.com/regions.html?S=1&RegionLink=QUE&L=En](http://www.croisieresaml.com/regions.html?S=1&RegionLink=QUE&L=En))

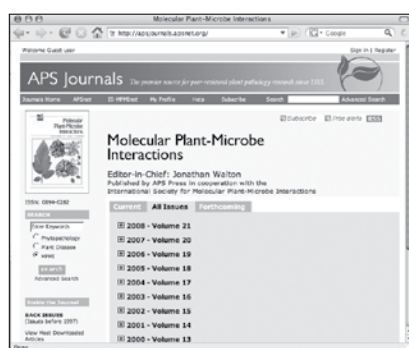
*Bienvenue à Québec continued on page 2*



XIV  
International Congress

On Molecular  
Plant-Microbe Interactions

July 19-23, 2009, Québec City, Canada


**Track the Impact of  
Your Research**

You can track the number of times your research is cited by other journal articles. Just open an abstract and click "Alert me when new articles cite this article" in the quick links box to the right. Then sign in or register for your free profile to receive an e-mail notification each time your article is cited. Sign up today by visiting <http://apsjournals.apsnet.org> and clicking "My Profile." For help setting up your citation alerts, contact **Kayla Heurung** at [kheurung@scisoc.org](mailto:kheurung@scisoc.org).

## A Message from the President



Federico Sanchez

At the end of a recent meeting report of The Keystone Symposium on Plant Innate Immunity, written by **Silke Robatzek** and **Yusuke Saijo** (Genome Biology 9:304, 2008), the authors cited the concluding remarks of **Jeff Dangl's** presentation. Dangl stated that "one reason for the successful growth of the field of plant-microbe interactions had been the sharing of resources and unpublished information between researchers," and that he hoped that this would continue. I could not agree more with Dangl—this is one of the fundamental reasons to become a member of IS-MPMI and, by this, to promote its continuity. IS-MPMI members have the opportunity to witness and to be part of the fast development of this exciting and vigorous field. Members gain immediate access to the *IS-MPMI Reporter* and to the recent addition of *MPMI's* new online features and custom content alerts. These two member benefits are key elements to create networking, promote growth, and increase the robustness that lay in the heart of the MPMI vibrant community. The *IS-MPMI Reporter*, lead by Editor-in-Chief **Sophien Kamoun**, is a prime channel to communicate news about meetings, job opportunities, and relevant information in the field and to publish and read hot scientific notes.

IS-MPMI members receive an 80% discount on subscriptions to *MPMI*. The *MPMI* journal has an outstanding international reputation and is a leading scientific publication specializing in the interaction of plants with microbes. *MPMI* publishes significant primary research and reviews on the molecular biology and genetics of pathological, symbiotic, and associative interactions between microbes and plants. The success of the journal is greatly due to the excellent labor performed by the Editorial Board, headed by Editor-in-Chief **Jonathan Walton**, which accounts for the quality and novelty of the research accepted for publication. *MPMI* research articles are now fully open-access within just 12 months of publication. I invite you to visit <http://apsjournals.apsnet.org/loi/mpmi> to learn more about the advantages of publishing in *MPMI*.

By becoming members, we automatically gain a substantial price cut of the registration fee for the biennial congress that the society sponsors. In keeping with the international nature of the society, the congress moves among different continents and countries. Congress venues usually are held at top cultural centers in interesting and historical cities. Even more important, the congresses become the auspicious occasion during which attendees at all career levels have opportunities to interact with and learn from renowned scientists, share unpublished information, and trigger fruitful and stimulating discussions and long-lasting collaborations with colleagues from all over the world.

Help us to grow and become a stronger community! Invite a colleague to join the society by December 31, 2008. You will automatically become eligible to get into a drawing for free registration to the XIV Congress to be held in Québec City in 2009! Members who bring in five or more new members will receive free membership renewal for 1 year. Please visit the Member-Get-A-Member webpage ([www.ismpminet.org/members/refermember.asp](http://www.ismpminet.org/members/refermember.asp)) to learn more regarding this special campaign. Start recruiting new members today!

Federico Sanchez  
President



- Banquet at the Centre des congrès de Québec ([www.convention.qc.ca/tiki-index.php?page=destination\\_en\\_americas](http://www.convention.qc.ca/tiki-index.php?page=destination_en_americas))
- Live entertainment by the renowned Painchaud family ([www.patricepainchaud.com](http://www.patricepainchaud.com))

Preregistration and web site will open summer 2008. For more information, contact the Local Organizing Committee at [mpmi2009@ulaval.ca](mailto:mpmi2009@ulaval.ca).

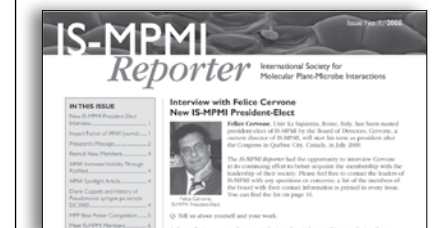
## Does Your Institution Subscribe to MPMI Online?

Hundreds of institutions do. Recent subscribers include the University of Colorado, the University of Alaska, the University of Georgia, the University of Helsinki, and Arizona State University. Recommending MPMI Online to your library is easy; just fill out the quick online recommendation form at [www.ismpminet.org/journal](http://www.ismpminet.org/journal).

## Your Ideas Wanted!

- Have ideas for articles for the Reporter?
- Want to share graduation news, job changes, new appointments, thesis abstracts, or more?

E-mail your news articles or ideas to [ismpmireportereditor@scisoc.org](mailto:ismpmireportereditor@scisoc.org).



## Interviews with IS-MPMI Leadership

The *IS-MPMI Reporter* is continuing its effort to better acquaint the membership with the leadership of their society by publishing interviews with members of the Board of Directors. In this issue, you will find an interview with Treasurer **Matteo Lorito** and Director **Sheng Yang He**. Please feel free to contact the leaders of IS-MPMI with any questions or concerns; a list of the board with their contact information is printed in every issue. You can find the list on page 32.



Matteo Lorito

### Matteo Lorito, IS-MPMI Treasurer

Q: Tell us about yourself and your work.

A: I am a happy father of two beautiful kids (7 and 3 years old) and I am part of a husband-and-wife research team. I basically started my professional career at the same time that I met **Sheri Woo**, my wife, at the Department of Horticultural Sciences at Cornell University in 1990.

I was a young visiting scientist coming from the University of Naples with very little lab experience and a less-than-basic English proficiency. Needless to say, Sheri helped me a lot on both aspects (she was already in the lab of **Gary Harman** that hosted me at Cornell).

I obtained my degree from the University of Siena with a thesis in plant physiology and cytology. I started to work on plant-fungus interactions in 1989 in Naples first and then continued for another 3 years at Cornell. I returned to Italy in 1994 with Sheri because the Italian National Council of Research was funding a new program on biological control at the Department of Plant Pathology of the University of Naples, and I was basically hired to develop the molecular side of the project. We decided to take the risk, with the idea of going back to the U.S.A. if things didn't work out well. Eventually we stayed, and both obtained faculty positions, but most importantly we managed to build a new research group. From a single room filled with boxes, our Biocontrol Group is now about 25-people strong, occupying an entire building with two entire floors of lab space and several permanent staff.

My scientific interest used to be more on the microbial (fungal) side (in fact, I am probably better known in the fungal scientific community than the MPMI one), but the chemical interaction with the plant has become more and more important in the biocontrol processes that I have been studying now for about 20 years. I have been intrigued by the basic concept of biocontrol since I was a student: it seemed such an important beneficial work to try to kill pathogens and reduce chemical contamination in food and the environment! I almost immediately became fascinated by the great potential of biocontrol fungi, in particular those belonging to the genus *Trichoderma*, not only for their versatility in terms of practical applications but also for the incredibly complex mechanisms of interaction with other microbes and of course the plant. This has been my general field of research. Even if our work has been focused on one system, it has been expanded to cover a variety of aspects.

We have been studying at the same time new fungal genes, effectors involved in mycoparasitism, and factors that activate plant beneficial responses but have also constructed new plant varieties resistant to fungal pathogens as well as developed and took to the market new biopesticide and biofertilizer products. We have studied promoter elements and used genomics techniques, but we have always kept an eye to the application potential as well as the farmer needs and expectations. A combination of papers published in journals, such as *PNAS* and *Nature*, along with the foundation of a few start-up biotech companies for the implementation of the new technologies and knowledge have been accomplishments that make me more satisfied with what we have done so far. Unfortunately, the system we are working with, which is the multiplayer interactions between plants, beneficial microbes, and pathogens, could be defined as a "fractal": a geometric figure considered to be infinitely complex that reveals more details the more you look closer! Almost like organizing an MPMI congress!!

Q: When and why did you first join the society?

A: I can't remember, it must be over 10 years ago; at that time, the society had a lot fewer members than today. When I saw the advertisement, my thought was: I am already an APS member, should I join this one too? Well, I had a very strong feeling about getting myself involved. It seems something new destined to grow, plus I liked the idea that it is an international society.

Q: Which IS-MPMI congress did you first attend? What was the experience like?

A: I briefly attended the congress in Amsterdam and fully attended the one in St. Petersburg. I was amazed by the amount of novel information that I was able to collect and use immediately for my research and my classes at the university. The complexity of the scientific program was astonishing...so many subjects! Very stimulating!!

Q: Do you think it is important that Ph.D. and post-doc students in your lab are IS-MPMI members? What can/should IS-MPMI offer young scientists in our field?

A: Yes, of course it is important, even though it is often difficult for Ph.D. students to figure out what field of research, if any, they will end up in to work. Unfortunately, today you have to go where the funds are, and thus, it is hard to make previsions. Regardless, I often remind them how important is to formally join a scientific community that fits their interests. I feel that IS-MPMI

Interviews with IS-MPMI Leadership continued on page 4



Interviews with IS-MPMI Leadership continued from page 3

is already doing a good job in serving young members, especially by organizing a congress every 24 months. This provides at least one congress opportunity in any Ph.D. course/post-doc term.

Of course, students and post-docs became much more attracted to the field of plant-microbe interactions when they have the chance to acquire a much deeper understanding of a particular subject or paper by listening to the presentations of the authors or of the senior scientists. In addition, an international congress can effectively promote and consolidate the first or a new job opportunity or contacts. Of course it is critical that congress organizers prioritize the participation of students and the social activities; in Sorrento, we kept student costs to a minimum (the society also helped by lowering the membership registration fee), provided about 50 bursaries, and lunches for all delegates together, basically by saving on the reimbursement of speaker travel costs. We had an attendance of almost 500 students and I believe most of the speakers understood and accepted the “sacrifice.” However, the society can still do more. Perhaps we could establish a few “best Ph.D. thesis awards” for IS-MPMI young members to be given every 2 years in the various areas of research in MPMI.

Q: What drew you to plant-microbe interactions?

A: I was attracted by the aspects of the biocontrol field that relate to MPMI (see above) and the idea that virtually any “basic science” project in plant-microbe interactions, of which I find the brainstorming involved fascinating, may produce results of direct utility for an industrial or agricultural application.

Q: What inspired you most in your career?

A: Various things. The obvious problems related to the fact that we depend so much on the use of huge quantities of chemical pesticides to fill our plate. The Snow White dilemma: should I eat this beautiful but chemical-loaded apple? or else? The incredible variety and potential application of the natural germplasm of beneficial microbes. The power of transgenic biotechnologies, applied both on plants and microbes. Finally, the marvel and the excitement of the look of students when they come, usually running, into your office to show his/her first new original research result.

Q: What’s the most exciting paper you read recently?

A: There are actually two of them. The first is “Recent fungal diseases of crop plants: Is lateral gene transfer a common theme?” by **Richard Oliver** and **Peter Solomon** published in the March 2008 issue of *MPMI*, a very informative and well-written review (editor’s note: see interview with author Richard Oliver on page 6). The second is a biotech work done in China by **Xiao-Ya Chen** and coworkers entitled “Silencing a cotton bollworm P450

monoxygenase gene by plant-mediated RNAi impairs larval tolerance of gossypol” and published in *Nature Biotechnology* (selected for the cover page) last year (vol. 25). An intriguing story about using a plant transformed with a specific dsRNA to directly silence genes in insects and eventually pathogens attacking the plant.

Q: What is the next “big thing” in plant-microbe interactions?

A: It’s difficult to say. Clearly the research on the similarities of the mechanisms by which plants and animals interact with microbes, insects, and viruses are going to expand and produce more fascinating results. From a biotechnological point of view, I expect to see a great deal of applications based on the rapidly growing knowledge of the role of RNAi, which will be more and more directly used for positively influencing plant interactions in agriculture. I am also particularly intrigued by the possibility of using bacterial secretion systems to deliver specific effectors in the plant cells, a technology recently developed by a few leading scientists in this field.

Q: What’s your favorite gene?

A: An endochitinase-encoding gene of *Trichoderma* spp. Its product has a variety of functions: kills and degrades other fungi during the mycoparasitism process, releases compounds that activate the beneficial fungus, is recognized by the plant cells, and activates a specific response related to priming of the ISR. It is useful for industrial purposes to degrade chitin in marine wastes.

Q: What are your favorite activities outside the lab?

A: I grew up in a seaside town and I am an absolute sea lover. I have done many sea-related activities and sports, and at the moment, I am particularly fond of deep sea scuba diving, but without a fishing purpose (with age, I became more concerned and switched my objective from catching to observing). I am also a good Blockbuster client!

Q: What book are you reading these days?

A: Just finished reading *The Kite Runner* by Khaled Housseini, a great story of friendship and human interactions in a war-torn environment. I am also reading, again, the *Divine Comedy of Dante Alighieri*. I was forced to study this classical Italian poetry book as a high school student with a humanistic program, but I hated it at that time and couldn’t appreciate the complexity and beauty of this story in which the poet imagines the visit to Hell, Purgatory, and Heaven.

Q: What’s your favorite vacation?

A: With my family to our house by the sea. Life is a beach!



Sheng Yang He

### Sheng Yang He, IS-MPMI Director

Q: Tell us about yourself and your work.

A: I grew up in a major agricultural province (Zhejiang Province) in China. “Crop protection” was a familiar term, even when I was in elementary school. The distinct smells of pesticides sprayed on rice fields and removing cotton boll weevil larvae from shoulder-tall cotton plants by hand (with other classmates) were part of my childhood.

I completed both B.S. and M.S. degrees at Zhejiang Agricultural University. My M.S. thesis was on the identification of fungi that parasitize cotton root-knot nematodes in the laboratory of **Qixin Ge**. Although it was a lot of fun collecting soil samples in cotton fields and watching fungi using contracting rings to capture nematodes, toward the end of my master’s program I was really attracted by the idea of using molecular techniques to study plant pathology questions.

In the fall of 1986, I came to the United States to pursue a Ph.D. degree (first at the University of Maryland, College Park, and then at Cornell University). I was soon mesmerized by research into the cloning of various bacterial genes involved in plant-pathogen interactions, particularly the cloning of *avr* genes (by **Brian Staskawicz** et al., 1984) and *hrp* genes (by **Peter Lindgren** et al., 1986). The mysterious nature of these genes was a topic of numerous discussions throughout my Ph.D. program in the laboratory of **Alan Collmer**. There were many fellow students/post-docs in the Departments of Plant Pathology (too many to mention here) and Plant Breeding (e.g., **Greg Martin** and **Pam Ronald**).

In 1991, I completed my Ph.D. research on the cloning of *Erwinia chrysanthemi* *out* genes involved in type II secretion. I continued part of my post-doctoral research in Collmer’s laboratory and was given the great opportunity to work on the function of *Pseudomonas syringae* *hrp* genes, a subject that remained for many years the focus in my own laboratory, first at the University of Kentucky and then at Michigan State University. During the entire decade of the 1990s, my colleagues and I investigated the putative secretion function of *hrp* genes, the action of *AvrB* inside the plant cell, and the assembly of the Hrp pilus.

During my post-doctoral years, I was also fascinated by the development of the *Arabidopsis*-*P. syringae* interaction as a model pathosystem in the laboratories of **Fred Ausubel**, **Brian Staskawicz**, and **Jeff Dangl** (where I spent my first sabbatical leave). However, I noticed that the research efforts on this pathosystem were concentrated almost entirely on the study of disease resistance mechanisms. There was very little emphasis on studying

how *Pst* DC3000 causes disease. We created several *hrp* mutants in *Pst* DC3000 and focused on how *AvrPto*, *AvrE*, and *HopM1* (sequences of these effectors were available prior to 1996) facilitate *Pst* DC3000 pathogenesis in *Arabidopsis*. It turns out that a major function of these virulence effectors is suppressing host defenses.

We also study the *P. syringae* toxin coronatine, especially its activity in suppressing bacteria-triggered stomatal closure. Experiments with coronatine also helped the identification of the substrates (JAZ repressor proteins) of the SCF<sup>COI1</sup> E3 ubiquitin ligase involved in jasmonate signaling and implicated COI1/JAZ complexes as receptors for JA-Ile and coronatine.

Q: When and why did you first join the society?

A: It must have been around 1990? IS-MPMI is a natural scientific home for me.

Q: Which IS-MPMI congress did you first attend? What was the experience like?

A: Interlaken, Switzerland (1990?). The science, conversations, and surrounding scenery were all fantastic!

Q: Do you think it is important that Ph.D. and post-doc students in your lab are IS-MPMI members? What can/should IS-MPMI offer young scientists in our field?

A: They should definitely be members. IS-MPMI provides a unique and exciting scientific home and identity. We should find innovative ways to enhance the involvement of young scientists in various activities of IS-MPMI.

Q: What inspired you most in your career?

A: The prospect of finding affordable and effective methods of controlling plant diseases through innovative research.

Q: What’s the most exciting paper you read recently?

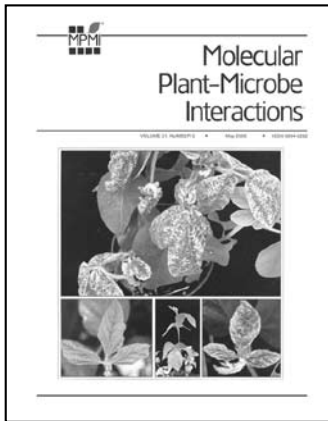
A: There are so many great stories in all areas of MPMI recently and it is impossible to pick one. On the topic of *P. syringae*, I just read a paper from the laboratories of **Robert Dudler** and **Steve Lindow** (Nature 452:755-758) this week. This paper reports an intriguing virulence activity of a *P. syringae* toxin, syringolin A. This toxin directly inhibits the eukaryotic 26S proteasome, which could potentially shut down many plant cellular processes. This is another example of a small toxin having big effects.

Q: What is the next “big thing” in plant-microbe interactions?

A: One of the first papers I read after I came to the United States was the coat protein-mediated resistance against TMV from **Roger Beachy**’s lab, illustrating a novel method of engineering disease resistance. Something like that for

Interviews with IS-MPMI Leadership continued on page 9

## Why Do New Diseases Emerge?



A review in the March 2008 issue of *MPMI* examined the recent emergence of many new diseases and offered a reason why those diseases may be prominent now. “Recent fungal diseases of crop plants: Is lateral gene transfer a common theme?,” by **Richard P. Oliver** and **Peter S. Solomon** of the Australian Center for Necrotrophic Fungal Pathogens,

Murdoch University, Australia, pulls together several lines of evidence about the diseases of crop plants that emerged in the twentieth century.

*IS-MPMI Reporter* had the opportunity to speak with Oliver about his review article. Oliver says they were struck by how many features these “new” diseases had in common. “First, many were necrotrophic, second, many were producers of host-specific toxins, and third, many are in the fungal order called the Pleosporales. Finally, evidence of lateral gene transfer exists for some of these host-specific toxin (HST) genes and in most cases the question is still open.” Oliver stated that the article is a speculation from the specific to the general as to whether some or even all new diseases of crops are the result of lateral gene transfer. “Our aim was to stimulate discussion and we seem to have succeeded in that,” said Oliver.

Oliver works on the necrotrophic diseases of broadacre crops of Australia with a particular focus on diseases of legumes and on the wheat pathogen *Stagonospora nodorum*. Said Oliver, “The dogma was pathogens like *Stago* produce a cocktail of nonspecific toxins and cell-wall-degrading enzymes. This fit with the observation that resistance in wheat was variable and partial. Genetic analysis of resistance in wheat identified numerous weak and variable QTLs. Progress in improving disease resistance (and remember we are funded directly by farmers here in Australia) was always going to be a hard slog.” Oliver’s team was able to obtain the *S. nodorum* genome sequence in 2005 and this showed that *S. nodorum* had the *ToxA* gene. *ToxA* was well known as an HST from *Pyrenophora tritici-repentis*, the wheat tan spot pathogen.

Like many IS-MPMI members, fungal taxonomy was a black box for Oliver, but his team couldn’t help being intrigued by the finding that both species they study are Pleosporales. Together with **Bruce McDonald**’s group in Zurich and **Tim Friesen**’s group in Fargo, they put together a portfolio of evidence that *ToxA* was laterally transferred from *S. nodorum* to *P. tritici-repentis*. Tan spot is now a major disease but was unknown on wheat before about 1940, so it clearly is a new disease.

On creating the review article, Oliver said the most difficult part was to identify new diseases. Questioned Oliver, “Different diseases are more important now than 100 years ago, but why is that? Is it because the pathologists back then didn’t notice the symptoms?” A couple of conversations with **Nick Money** encouraged them to read some of the early literature in plant pathology, and the reading convinced them that there is no way the pathologists in 1920 would have missed these sorts of fungi. Microscopes and plating techniques were perfectly adequate and the surveys were being done efficiently. Name changes could be an issue. “So new diseases have emerged, but that could be for a variety of reasons, changes in the hosts, changes in agronomic conditions, by moving from some other part of the world into the fields, or by incremental mutation, but the most interesting possibility is lateral gene transfer,” Oliver concluded.

Oliver admits that lateral gene transfer was a “slow burn sort of topic, but is now flaming up. In the past, sequencing of genes was very likely to lead to the suggestion that it had been laterally transferred, but in most cases the evidence collapsed in due course. However, the flood of whole-genome sequences raises the evidence to a whole new level and we are seeing a clearing picture of genomic flexibility in timescales ranging from a few decades to hundreds of millions of years.”

Oliver feels that the most important information that IS-MPMI members should know about lateral gene transfer is the realization that HSTs are important in *S. nodorum* and many other related pathogens, and they give scientists a new and much more direct way to dissect these interactions and assist the breeders in producing resistant cultivars. “This approach looks good for *S. nodorum* and *P. tritici-repentis* but the intriguing question is whether it applies to other related pathogens like the *Alternaria alternata* group, the *Ascochyta/Phoma* group of legume pathogens, and *P. teres* on barley. We need more people researching these diseases and, with genome sequences costing a few thousand dollars, progress should be very rapid,” Oliver said.

As for his own research, Oliver says the top priority is to find more HSTs in *S. nodorum* and to use the toxin’s information to improve wheat resistance breeding. His team is working in a very productive collaboration with Friesen’s group to achieve those goals.

Review articles are welcome for *MPMI* and should consist of four to five pages that focus on a rapidly developing area of the molecular aspects of plant-microbe interactions. These may be solicited by the *MPMI* editor-in-chief or a senior editor or may be submitted by authors to be peer reviewed.

To access *MPMI* online, go to <http://apsjournals.apsnet.org/loi/mpmi>.

## Meet IS-MPMI Members

IS-MPMI's diverse membership spans the globe and includes professionals who have been in their field for decades, as well as those who are just starting out. To help members learn more about their colleagues, the *IS-MPMI Reporter* includes profiles of randomly chosen members at different career stages.

### Student



Helen Lovell

#### Helen Lovell

Centre for Research in Plant Science  
University of the West of England  
(UWE)  
Bristol, England

I am currently in the second year of my Ph.D. program and working in the molecular genetics lab run by **Dawn Arnold** at UWE. My project is also supervised by **John Mansfield** at Imperial College, London.

I received my honors degree in genetics from UWE in 2006. During my undergraduate studies, I spent my placement year working in the molecular genetics lab in the ophthalmology research department, run by **Andrew Dick**, at the Bristol Eye Hospital. Here, I worked on various projects, looking at single nucleotide polymorphisms associated with particular eye diseases. This experience sparked my interest in research. I became particularly interested in plant pathology and plant-microbe interactions after undertaking a summer project at UWE in the Arnold lab looking at activation and inactivation of MAPK in bean and Arabidopsis after infection with different *Pseudomonas syringae* pathovars.

I was lucky enough to be able to stay on at UWE to pursue a Ph.D. degree. One of the major focuses in the Arnold lab is studying the interaction between *Pseudomonas syringae* pv. *phaseolicola* and its host, the common bean, in which it causes halo blight. *P. syringae* pv. *phaseolicola* race 4, strain 1302A contains a 106-kb genomic island designated PPHGI-1, which harbors the avirulence gene *avrPphB*. It is known that PPHGI-1 can excise from the genome of *P. syringae* pv. *phaseolicola* 1302A, causing a change in virulence from the hypersensitive response to disease. My project includes identifying genes responsible for the excision, mobility, and integration of PPHGI-1, as well as investigating the conditions that lead to island loss in planta. The overall aim being to provide a molecular explanation of how exposure to host resistance mechanisms in plants forces the selection of new, virulent forms of plant pathogens.

I joined IS-MPMI in 2007 shortly before attending the XIII International Congress in Sorrento, Italy. This was the first conference I had ever attended and it was an excellent experience. IS-MPMI also provided me with some of the funding I required to attend this conference, which was much appreciated, thank you. I'm really looking forward to the XIV International Congress in 2009.

### Post-Doctoral/Early Career



Katja Schlink

#### Katja Schlink

Center of Life and Food Sciences  
Weihestephan  
Technische Universität  
Munich, Germany

My research interest is functional genomics, especially of genes involved in stress response. I study stress response using analyses of transcriptome and proteome changes. There has been a long-lasting battle leading to the

coevolution of defense and invasion strategies of plants and their pathogens. Both plants and pathogens developed an arsenal of molecules to control and manipulate each other. Differences of plant tolerance and susceptibility within the same species interactions are often a matter of combination of plant genotype and pathogen race. To investigate interactions in-depth, we need to analyze them at as many levels as possible from transcriptome and proteome to metabolome and phenotype.

Since spring 2003, I have been at the Center of Life and Food Sciences Weihestephan of the Technische Universität München and have performed my research on tree species, such as *Picea abies* (Norway spruce) and *Fagus sylvatica* (European beech). Stress adaptation is important for all plants, but trees are exceptionally long-lived organisms and it takes years for them to be mature enough for sexual reproduction. Therefore, they will have to survive more stress events than short-lived plants during their life cycle. It is reasonable to expect differences in stress response strategies between long- and short-lived species.

In order to start analysis in tree species, the first challenge is always to establish the methods, because most protocols are inefficient for trees. This was particularly true for protein extraction and isoelectric focussing protocols used in the proteome analyses. But another issue is the lack of sequence information for most trees, with the exception of poplar. In the case of the genus spruce, there is a great number of ESTs in the databases (~470,000), but in the case of beech, there are as few as 350 ESTs available so far. Thus, I first generated 1,149 ESTs from a subtractive library of *Phytophthora citricola*-infected roots of *Fagus sylvatica*. These were utilized to design an oligo array I use for transcriptional profiling of the local and systemic reactions of beech in this compatible interaction. The overlap of pathways of pathogen and wound response caused me to also compare the pathogen to the wound reaction.

Meet IS-MPMI Members continued on page 8



Another interest of mine is the response and adaptation of plants to heat stress. The rising temperatures and, in particular, the currently fast speed of climate change will tremendously effect especially long-lived plants with long generation cycles and, consequently, very long replacement cycles. We were able to detect differential protein expression in heat-stressed *Picea abies* ecotypes originating from different elevations and with differing thermotolerance, which gives an insight into the adaptation of Norway spruce to higher temperatures. In addition to this abiotic stress, climate change and the introduction of alien species by humans will challenge plants with new pathogens and pests in the future. The response of plants to the changing environment and their interactions within changing biological communities will be an important issue of research.

Before studying trees, I worked on truly smaller but as interesting plants. From the beginning of the year 2001 until spring 2003, I was a post-doc in the Plant Biotechnology group of **Ralf Reski** (Albert-Ludwigs-Universität Freiburg, Germany). In this collaboration project with BASF Plant Science, homologous recombination in the moss *Physcomitrella patens* was used to produce a large collection of knock-out mutants (more than 73,000 plants) that was metabolically and phenotypically characterized to gain knowledge about gene functions. *Physcomitrella* is the only model plant with a high rate of homologous recombination in the nucleus enabling efficient gene targeting. In addition, the access to gene functions is straightforward since the mutants exist as haploids in the gametophytic stage dominating the moss life cycle. During this project, I also concentrated on the mechanisms of recombination and the comparison with higher plants that rarely show events of homologous recombination when attempting to target nuclear genes. The molecular mechanisms show high similarities but the frequency is shifted predominantly toward homologous recombination in *Physcomitrella*. In cooperation with the group of **David Cove** (Centre for Plant Sciences, University of Leeds, U.K.), we were able to propose a model for transgene integration in *Physcomitrella*. It would be of enormous advantage if the high efficiency of homologous recombination could be transferred to higher plants.

I even worked with organisms a good deal smaller than moss. After I obtained my diploma in biology in 1996 from the Ruhr-Universität Bochum (Germany), I moved to the lab of **Klaus V. Kowallik** at the Heinrich-Heine Universität in Düsseldorf, Germany. The group worked on endosymbiosis and plastid evolution, and my research was focused on gene function analysis in cyanobacteria. During this Ph.D. project, I received a scholarship from the Industrie Club Düsseldorf to work abroad. I used this scholarship to join the lab of **Don Bryant** at Pennsylvania State University, United States, for almost 1 year. I am grateful that he accepted me into his group and supported my project. This was a great experience and I met some of my dearest friends. In 2000, I received my doctorate degree from the Faculty of Mathematics and Natural Sciences of the Heinrich-Heine-Universität Düsseldorf.

I joined IS-MPMI in 2006. I enjoy reading the newsletter and keeping informed about recent developments and the field of plant pathology. I highly value the great variety of aspects of plant interactions with viruses, prokaryotes, fungi, oomycetes, nematodes, and insects covered by the society's journal.

### Distinguished



Lee Hadwiger

### Lee Hadwiger

Washington State University  
Pullman, WA, U.S.A.

It is indeed a pleasure at this point in my career to get this invitation to describe, as a member of IS-MPMI, my educational background and some of the contributions of my students over the years.

I received my B.S. and M.S. degrees from Oklahoma State University.

My Ph.D. degree work was on the biochemistry of disease resistance of watermelons against *Colletotrichum lagenarium* and was directed by **Charles Hall** at Kansas State University. Hall bred excellent watermelons, such as Crimson Sweet. On post-doctorals, I worked on alkaloid biosynthesis under **George Waller** at Oklahoma State University and on plant amino acid/cyanoglucoside biosynthesis under **Eric Conn** at the University of California Davis. Except for a sabbatical under **Klaus Hahlbrock** at Freiburg, Germany, I have been in the Department of Plant Pathology at Washington State University to date, working mainly on the molecular biology of nonhost resistance.

The major system employed is the cuticle-free, intact endocarp tissue of pea challenged both by the bean pathogen *Fusarium solani* f. sp. *phaseoli* and the true pea pathogen *F. solani* f. sp. *pisi*. A mini-review covering much of this research appears in the April issue of *Phytopathology*. This system produced some of the first clones of PR genes such as DRR49 and DRR276 (RNase), DRR206 (intermediate enzyme in lignan synthesis), and pI39 and pI230 (defensins). Two signals were identified, FspH DNase and chitosan, that are released from the fungus and are able to induce total immunity in pea tissue to *F. solani* f. sp. *pisi*. Follow-up research on the modes of action of these elicitors has enabled the investigations of their modes of action at the chromatin level. Components of this basic research have a potential for practical applications. A combination of the promoter from the PR gene, DRR206, and the open reading frame of the FspH DNase gene when transferred to tobacco enabled the development of immunity to *Pseudomonas syringae* pv. *tabaci*. Individual pea PR genes have been used with a constitutive promoter to enhance disease resistance in potatoes and canola. The latter was in collaboration with **Brian Fristensky**, a former student, and was published in *MPMI*. Fristensky, now at the University of Manitoba, and **Robert Riggleman** did the early cloning in my lab.



The pea system, while not the ideal mutational genetic tool of choice, has the advantage of monitoring the total resistance response against the bean pathogen that occurs within 6 hours. The synchronization of the response throughout the tissue enables the examination of the early changes in structure that lead to transcription of the PR genes at the nucleosome level.

Spin-offs from chitosan research have enabled the development of a control of late blight of potatoes that is useful to organic growers.

I have been amazed that pathologists have not further pursued the DNases, which are released from most classes of plant-pathogenic fungi, as elicitors in other plant systems.

I have previously encouraged *MPMI* editors to develop the flexibility that allows publication of contributions of the many plant-microbe interactions in addition to those of model systems. *MPMI* is the ultimate publication for our profession worldwide. IS-MPMI-sponsored meetings continue to be valuable venues for one-on-one interchanges between scientists.

**Interviews with IS-MPMI Leadership** *continued from page 5*

other types of pathogens would be the ultimate big thing for me.

Q: What's your favorite gene?

A: At present, *avrE*. The *avrE* gene was cloned in the laboratory of Professor **Noel Keen**. This gene and its orthologues (called *dspE* or *WtsE*) in other pathogen species play an important role in bacterial pathogenesis. However, their molecular action in plants remains a puzzle.

Q: What are your favorite activities outside the lab?

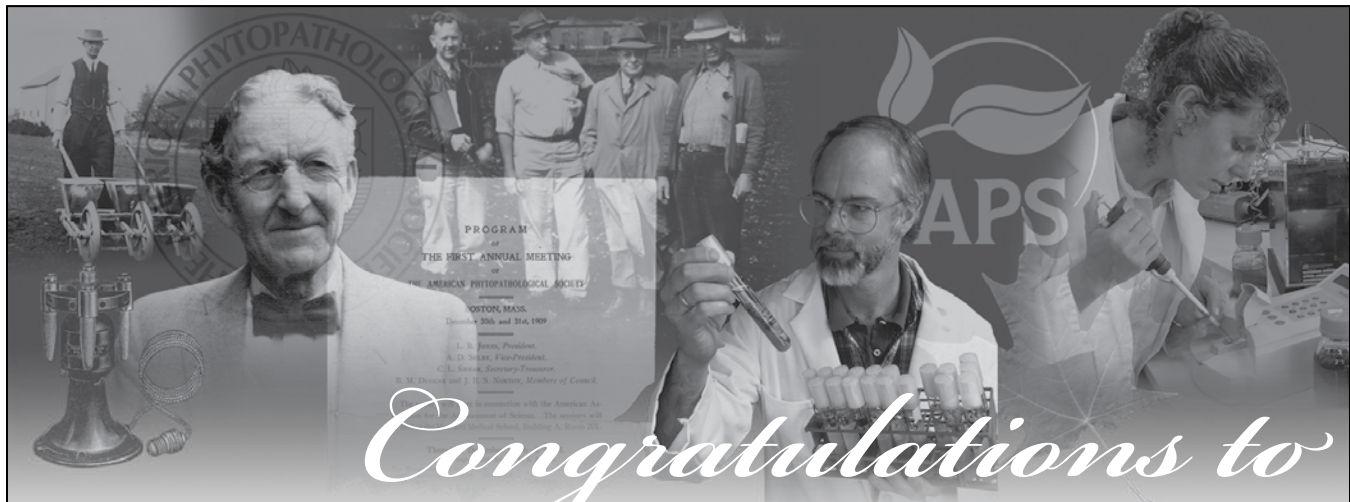
A: Picking up my son from school and accompanying him to various after-school activities.

Q: What books are you reading these days?

A: *Color of Water* by James McBride.

Q: What's your favorite vacation?

A: I enjoy visiting my parents who still live in the same village where I grew up, although rice and cotton fields have been replaced mostly by buildings.



*Congratulations to*

## The American Phytopathological Society on its Centennial!

**2008 APS Centennial**  
*History of Excellence  
Future of Promise*

We would like to extend our most sincere congratulations to APS on its Centennial Anniversary. For 100 years APS has been instrumental in advancing plant health science worldwide.

**The APS Centennial Celebration will be held July 26-30, 2008 in Minneapolis, Minnesota.** The celebration will include an incredible scientific program, special centennial events and an exhibition of important industry suppliers. Hundreds of experts will discuss the latest research, look back on APS's history of excellence, and plan for the future.

## People



James Carrington

**James Carrington** was recently among the 72 new members and 18 foreign associates elected to The National Academy of Sciences. New members were chosen in recognition of their distinguished and continuing achievements in original research. Carrington is a professor at the Department of Botany and Plant Pathology, and the director of the Center for Genome Research and

Biocomputing at Oregon State University in Corvallis. Carrington was the keynote speaker during the 12th International Congress in Sorrento.



Hye-Sook Oh

**Hye-Sook Oh** recently completed her Ph.D. degree from the Department of Plant Pathology and Plant-Microbe Biology at Cornell University under the direction of **Alan Collmer**. Her thesis was entitled "Investigation of the lytic transglycosylase, HrpH, and other *Pseudomonas syringae* suppressors of basal defense." As part of this project, Oh developed novel assays for the elicitation of plant basal defenses and

used these assays to identify proteins secreted by the *Pseudomonas syringae* type III secretion system that are capable of suppressing such defenses. Her work focused on HrpH, which is a specialized lytic transglycosylase that plays an important role in the translocation of type III effector proteins and is itself translocated into plant cells.

The following students from the Graduate School Experimental Plant Sciences, a collaborative research and teaching institution of Wageningen University (WU), Radboud University (RU), Vrije Universiteit Amsterdam (VU), Leiden University (LU), University of Amsterdam (UvA), and Utrecht University (UU), focused their Ph.D. theses on interactions between plants and biotic agents.

**J. H. H. V. Custers.** Engineering disease resistance in plants. P. J. G. M. de Wit (promotor), M. H. Stuiver (copromotor); WU, Wageningen, 8 January 2007.

**C. C. N. van Schie.** Biosynthesis of volatile and hormonal terpenes in tomato. M. A. Haring (promotor); R. C. Schuurink (copromotor); UvA, Amsterdam, 9 January 2007.

**M. Staats.** *Botrytis* species on flower bulb crops: Phylogeny, genetic variation and host specificity. P. J. G. M. de Wit (promotor); J. A. L. van Kan (copromotor); WU, Wageningen, 15 January 2007. EPS certificate requested and granted.

**M. Groenewald.** Molecular characterization of *Cercospora beticola* and its relatives. P. W. Crous and P. J. G. M. de Wit (promotors); WU, Wageningen, 19 February 2007. EPS certificate requested and granted.

**R. Roohparvar.** Drug transporters of the fungal wheat pathogen *Mycosphaerella graminicola*. P. J. G. M. de Wit (promotor); L.-H. Zwijs and M. A. de Waard (copromotors); WU, Wageningen, 26 February 2007. EPS certificate requested and granted.

**H. J. Finkers.** The genetics of *Botrytis cinerea* resistance in tomato. R. G. F. Visser (promotor); A. W. van Heusden and J. A. L. van Kan (copromotors); WU, Wageningen, 3 April 2007. EPS certificate requested and granted.

**V. R. van Oosten.** Induced pathogen and insect resistance in *Arabidopsis*: Transcriptomics and specificity of defense. M. Dicke, L. C. van Loon, and C. M. J. Pieterse (promotors); WU, Wageningen, 18 April 2007. EPS certificate requested and granted.

**T. C. Marcel.** Genetic architecture of basal resistance of barley to *Puccinia hordei*. R. G. F. Visser (promotor); R. E. Niks (copromotor); WU, Wageningen, 11 May 2007. EPS certificate requested and granted.

**M. M. A. van Damme.** Genetic analysis of disease susceptibility in the *Arabidopsis-Hyaloperonospora parasitica* interaction. P. J. Weisbeek (promotor); G. van den Ackerveken (copromotor); UU, Utrecht, 21 May 2007. EPS certificate requested and granted.

**M. Wang.** Diversity and evolution of resistance genes in tuber-bearing *Solanum* species. M. S. M. Sosef (promotor); R. G. van den Berg and B. Vosman (copromotors); WU, Wageningen, 12 June 2007. EPS certificate requested and granted.

**A. E. Alvarez.** Resistance mechanisms of *Solanum* species to *Myzus persicae*. M. Dicke (promotor); W. F. Tjallingii and B. Vosman (copromotors); WU, Wageningen, 20 June 2007. EPS certificate requested and granted.

**M. Djavaheri.** Iron-regulated metabolites of plant growth promoting *Pseudomonas fluorescens* WCS374: Their role in induced systemic resistance. L. C. van Loon (promotor); P. A. H. M. Bakker (copromotor); UU, Utrecht, 26 June 2007.

**I. Kars.** The role of pectin degradation in pathogenesis of *Botrytis cinerea*. P. J. G. M. de Wit (promotor); J. A. L. van Kan (copromotor); WU, Wageningen, 21 September 2007. EPS certificate requested and granted.

**H. Tran Thi Thu.** Interactions between biosurfactant-producing *Pseudomonas* and *Phytophthora* species. P. J. G. M. de Wit (promotor); J. M. Raaijmakers (copromotor); WU, Wageningen, 9 October 2007. EPS certificate requested and granted.

**D. Ribeiro.** Towards understanding TSWV particle assembly: Analysis of the intracellular behaviour of the viral structural proteins. R. W. Goldbach (promotor);

R. J. M. Kormelink (copromotor); WU, Wageningen, 6 November 2007. EPS certificate requested and granted.

**B. Gorguet.** Parthenocarpy and functional sterility in tomato. R. G. F. Visser (promotor); A. W. van Heusen (copromotor); WU, Wageningen, 16 November 2007. EPS certificate requested and granted.

**Have news you want to share with the society? Submit it online at [www.ismpminet.org/newsletter/submissionform.asp](http://www.ismpminet.org/newsletter/submissionform.asp).** Send us news of your degree completion and, as a special graduation gift, you can receive 2 years of membership in IS-MPMI for the price of 1!

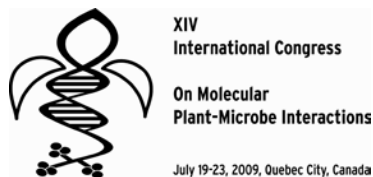
## XIV International Congress July 19-23, 2009 • Québec City, Canada



Photo courtesy Yves Tessier, Tessima

Make plans now to attend the XIV International Congress  
on Molecular Plant-Microbe Interactions in beautiful Québec City!

Visit [www.ismpminet.org](http://www.ismpminet.org) for Congress updates.





## Employment

### Post-Doctoral Position Opening in Molecular Plant-Pathogen Interactions

Candidate should have Ph.D. degree in plant pathology, microbiology, plant science, or related fields. Experience in molecular biology and microscopy and strong written and communication skills are highly desirable. Applicant must have a successful publication history. The selected post-doctoral researcher will be part of an NIH-funded project to investigate stomate-based innate immunity against bacterial infections in Arabidopsis and fresh vegetable crops. The project also aims at a basic understanding of how different bacteria activate or inactivate this newly discovered plant immune response (see publications: Cell 126:969-980; Cellular Microbiology 9:1621-1629; Nature 448:661-665). The University of Texas at Arlington (UTA) is a full-service research and teaching university with more than 25,000 students. See: <http://www.uta.edu/biology/>. The University is located in the city of Arlington and in close proximity of the Dallas-Ft. Worth Metroplex, one of the leading centers of aerospace, electronics, and telecommunications activity in the United States. Excellent recreational, entertainment, and cultural facilities, major airport, modern shopping complexes, and professional sports organizations are located in Arlington and the surrounding area. Cost of living is very affordable in this area. UTA is an equal opportunity/affirmative action employer. **Salary:** Commensurate with qualifications and experience. **Closing Date:** Position is available immediately and applications will be considered until a suitable candidate is identified. Please send a letter of interest, curriculum vitae, and contact information for three professional references. **Contact:** Maeli Melotto, University of Texas at Arlington, Department of Biology, B-29 Life Science, 501 S. Nedderman Drive, Arlington, TX 76019 U.S.A. **E-mail:** [melotto@uta.edu](mailto:melotto@uta.edu).

### Post-Doctoral Position

A post-doctoral position is available immediately to conduct research directed at the molecular and biochemical analysis of cyst nematode parasitism proteins. This project will involve expression of nematode parasitism genes in plants, silencing of nematode genes through RNAi, and identifying plant proteins interacting with nematode parasitism proteins, among other approaches. The University of Missouri offers excellent opportunities in plant biology through the Interdisciplinary Plant Group ([www.plantgroup.org](http://www.plantgroup.org)). Our laboratory is located in the Christopher S. Bond Life Sciences Center (<http://bondlsc.missouri.edu/>), which provides state of the art infrastructure and an interdisciplinary research and education environment. For more information, visit our lab website at <http://plantsci.missouri.edu/>

[mitschumlab/](http://mitschumlab/). Highly motivated individuals with a strong background in molecular plant-microbe interactions, plant molecular biology, and/or genetics are encouraged to apply. Expertise in plant molecular biology is required. Experience working with Arabidopsis is desirable. Nematology experience is not required. The successful candidate is expected to be independent and have excellent written and verbal communication skills. Post-doctoral positions are for 1 year with the possibility of extension. **Salary:** Commensurate with experience. A full benefits package is provided with the position. **Closing Date:** Review of applications will continue until a suitable candidate is found. Interested candidates should send a cover letter describing your interest and expertise, a CV, and contact information (name, e-mail address, and phone number) for three scientists who can serve as references to Melissa Goellner Mitchum. Please enter POSTDOC POSITION in the subject line. **Contact:** Melissa Goellner Mitchum. **E-mail:** [goellnerm@missouri.edu](mailto:goellnerm@missouri.edu).

### Product Development Manager

FMC Corporation is a Fortune 1000, diversified chemical company serving the agricultural, industrial, and consumer markets globally for more than a century with innovative solutions, applications, and quality products. As a global leader utilizing advanced technologies and customer-focused research and development, FMC provides innovative and cost-effective solutions within their key business segments: agricultural products, specialty chemicals, and industrial chemicals. This position reports to the manager of Product Development, North America. The purpose of this position is to facilitate and oversee North American product development activities for assigned active ingredients, crop segments, geographic area, and product or customer specific initiatives. This position works closely with marketing, sales, regulatory, formulations, and peer product development managers along with key customers and global development to apply broad product development knowledge and prioritize product development investments. The position will have responsibility and accountability for prioritizing and implementing product development plans related to existing and new products for North America. Visit <https://fmc.ats.hrsmart.com/cgi-bin/a/highlightjob.cgi?jobid=561> for responsibilities and experience requirements. **Salary:** Employees enjoy very competitive compensation, a full menu of work/life benefits, and opportunities to continue developing their skills and expanding their career. Please submit a resume. **Contact:** **E-mail:** [careers@fmc.com](mailto:careers@fmc.com); **Web:** <https://fmc.ats.hrsmart.com/cgi-bin/a/highlightjob.cgi?jobid=561>.

## Welcome New Members

The following members joined IS-MPMI between January 1 and April 30, 2008.  
Please join us in welcoming them to the society!

**Melvin D. Bolton**

USDA ARS  
Fargo, ND, U.S.A.

**Monika Debreczeny**

Bay Zoltan Foundation  
Szeged, Hungary

**Darrell Desveaux**

Univ of Toronto  
Toronto, ON, Canada

**Dulguun Dorjgotov**

Inst for Plant Genomics  
Szeged, Hungary

**Georg Felix**

Univ Tubingen  
Tuebingen, Germany

**Zhihuan Gao**

Univ of South Carolina  
Columbia, SC, U.S.A.

**Juliana E. Mastronunzio**

Univ of Connecticut  
Storrs, CT, U.S.A.

**Thomas K. Mitchell**

Ohio State Univ  
Columbus, OH, U.S.A.

**Melissa G. Mitchum**

Univ of Missouri  
Columbia, MO, U.S.A.

**Gloria M. Mosquera**

Colorado State Univ  
Fort Collins, CO, U.S.A.

**Klaus H. Oldach**

SARDI  
Urrbrae, Adelaide, Australia

**Osman E. Radwan**

Univ of Illinois  
Urbana, IL, U.S.A.

**Maryam Rafiqi**

Australian Natl Univ  
Canberra, ACT, Australia

**Pascal Ratet**

CNRS - Inst Sciences Vegetal  
Gif Sur Yvette, France

**Arantza Rico**

Univ of Oxford  
Oxford, United Kingdom

**Heather C. Rowe**

Univ of California  
Davis, CA, U.S.A.

**Jon Y. Suzuki**

USDA ARS PWA  
Hilo, HI, U.S.A.

**Adrian Alberto Vojnov**

Centro de Ciencia Y Tecnologia  
Saladillo, BA, Argentina

**Xinhua Zhao**

Aureogen BioScience  
Portage, MI, U.S.A.

## Share the Value of Membership

IS-MPMI is nearly 700 members strong. Help IS-MPMI continue to grow by recruiting your colleagues to join the society today.

Current members who successfully recruit new members through December 31, 2008, will be entered into a drawing for free registration to the XIV Congress! Members who bring in five or more new members will receive free membership renewal for one year.

For each new member you recruit, your name will be entered into the drawing, so the more new members you bring in, the higher your chances are of winning!

Visit [www.ismpminet.org/members/refermember.asp](http://www.ismpminet.org/members/refermember.asp) to download special membership applications or complete the online referral form and an e-mail will be sent to your colleague.

Contact the IS-MPMI membership department at +1.651.454.7250 or [ismpmiinfo@scisoc.org](mailto:ismpmiinfo@scisoc.org) with questions regarding this special campaign.

***Start recruiting new members today!***



## Recently published research in *Molecular Plant-Microbe Interactions*

Find complete abstracts online with links to full-text articles at <http://apsjournals.apsnet.org/loi/mpmi>

### March 2008, Vol. 21, Number 3

REVIEW—Recent Fungal Diseases of Crop Plants: Is Lateral Gene Transfer a Common Theme?

OsRAR1 and OsSGT1 Physically Interact and Function in Rice Basal Disease Resistance.

The Response Regulator HrpY of *Dickeya dadantii* 3937 Regulates Virulence Genes Not Linked to the *hrp* Cluster.

The Arg-Gly-Asp-Containing, Solvent-Exposed Loop of Ptr ToxA Is Required for Internalization.

Virulence of Plant Pathogenic Bacteria Attenuated by Degradation of Fatty Acid Cell-to-Cell Signaling Factors.

*Tobacco mosaic virus* (TMV) Replicase and Movement Protein Function Synergistically in Facilitating TMV Spread by Lateral Diffusion in the Plasmodesmal Desmotubule of *Nicotiana benthamiana*.

Characterization and Antifungal Properties of Wheat Nonspecific Lipid Transfer Proteins.

The *Pseudomonas syringae* Type III Effector HopAM1 Enhances Virulence on Water-Stressed Plants.

### April 2008, Vol. 21, Number 4

TECHNICAL ADVANCE—Polyubiquitin Promoter-Based Binary Vectors for Overexpression and Gene Silencing in *Lotus japonicus*.

TECHNICAL ADVANCE—Pathogenicity of *Pseudomonas syringae* pv. *tomato* on Tomato Seedlings: Phenotypic and Gene Expression Analyses of the Virulence Function of Coronatine.

Identification of a New Locus, *Ptr(I)*, Required for Rice Blast Resistance Gene *Pi-ta*-Mediated Resistance.

Transcription of *ENOD8* in *Medicago truncatula* Nodules Directs ENOD8 Esterase to Developing and Mature Symbiosomes.

The *rsmA*-like Gene *rsmA<sub>xcc</sub>* of *Xanthomonas campestris* pv. *campestris* Is Involved in the Control of Various Cellular Processes, Including Pathogenesis.

Cyst Nematode Parasitism of *Arabidopsis thaliana* Is Inhibited by Salicylic Acid (SA) and Elicits Uncoupled SA-Independent Pathogenesis-Related Gene Expression in Roots.



Gene Expression Profiling During Asexual Development of the Late Blight Pathogen *Phytophthora infestans* Reveals a Highly Dynamic Transcriptome.

Two Receptor-Like Genes, *Vfa1* and *Vfa2*, Confer Resistance to the Fungal Pathogen *Venturia inaequalis* Inciting Apple Scab Disease.

Host Genes Involved in Nodulation Preference in Common Bean (*Phaseolus vulgaris*)–*Rhizobium etli* Symbiosis Revealed by Suppressive Subtractive Hybridization.

Genetic Dissection Defines the Roles of Elsinochrome Phytotoxin for Fungal Pathogenesis and Conidiation of the Citrus Pathogen *Elsinoë fawcettii*.

Functional Characterization of a Gene Family Encoding Polygalacturonases in *Phytophthora parasitica*.

A Survey of the *Pseudomonas syringae* pv. *tomato* DC3000 Type III Secretion System Effector Repertoire Reveals Several Effectors That Are Deleterious When Expressed in *Saccharomyces cerevisiae*.

### May 2008, Vol. 21, Number 5

REVIEW—Plant Receptor-Like Serine Threonine Kinases: Roles in Signaling and Plant Defense.

TECHNICAL ADVANCE—Post-Transcriptional Gene Silencing in the Root System of the Actinorhizal Tree *Allocauarina verticillata*.

A Putative MAP Kinase Kinase Kinase, *MCK1*, Is Required for Cell Wall Integrity and Pathogenicity of the Rice Blast Fungus, *Magnaporthe oryzae*.

*api*, A Novel *Medicago truncatula* Symbiotic Mutant Impaired in Nodule Primordium Invasion.

Citrate Uptake into *Pectobacterium atrosepticum* Is Critical for Bacterial Virulence.

Two *Xanthomonas* Extracellular Polygalacturonases, PghAxc and PghBxc, Are Regulated by Type III Secretion Regulators HrpX and HrpG and Are Required for Virulence.

An Oleic Acid-Mediated Pathway Induces Constitutive Defense Signaling and Enhanced Resistance to Multiple Pathogens in Soybean.



Silencing a Candidate Nematode Effector Gene Corresponding to the Tomato Resistance Gene *Mi-1* Leads to Acquisition of Virulence.

NTH201, a Novel Class II KNOTTED1-Like Protein, Facilitates the Cell-to-Cell Movement of *Tobacco mosaic virus* in Tobacco.

Host-Dependent Expression of *Rhizobium leguminosarum* bv. *viciae* Hydrogenase Is Controlled at Transcriptional and Post-Transcriptional Levels in Legume Nodules.

Oxalic Acid Is an Elicitor of Plant Programmed Cell Death during *Sclerotinia sclerotiorum* Disease Development.

Multiple Activities Associated with the Capsid Protein of Satellite Panicum Mosaic Virus Are Controlled Separately by the N- and C-Terminal Regions.

Evidence for Transcriptional and Post-Translational Regulation of Sucrose Synthase in Pea Nodules by the Cellular Redox State.

Transcription Profiling of Soybean Nodulation by *Bradyrhizobium japonicum*.

Discovery of ADP-Ribosylation and Other Plant Defense Pathway Elements Through Expression Profiling of Four Different *Arabidopsis*–*Pseudomonas R-avr* Interactions.

Genome Organization and Evolution of the *AVR-Pita* Avirulence Gene Family in the *Magnaporthe grisea* Species Complex.

### June 2008, Vol. 21, Number 6

REVIEW—Twenty Years of Transgenic Plants Resistant to *Cucumber mosaic virus*.

REVIEW—Roadmap to New Virulence Determinants in *Pseudomonas syringae*: Insights from Comparative Genomics and Genome Organization.

REVIEW—Early Progress in Aphid Genomics and Consequences for Plant–Aphid Interactions Studies.

REVIEW—Global Switches and Fine-Tuning—ABA Modulates Plant Pathogen Defense.

TECHNICAL ADVANCE—Virus-Induced Gene Silencing (VIGS) as a Reverse Genetic Tool to Study Development of Symbiotic Root Nodules.

Tomatinase from *Fusarium oxysporum* f. sp. *lycopersici* Is Required for Full Virulence on Tomato Plants.

Soil Bacteria Confer Plant Salt Tolerance by Tissue-Specific Regulation of the Sodium Transporter *HKT1*.

Basic Compatibility of *Albugo candida* in *Arabidopsis thaliana* and *Brassica juncea* Causes Broad-Spectrum Suppression of Innate Immunity.

*WRR4* Encodes a TIR-NB-LRR Protein That Confers Broad-Spectrum White Rust Resistance in *Arabidopsis thaliana* to Four Physiological Races of *Albugo candida*.

Distinct and Combined Roles of the MAP Kinases of *Cochliobolus heterostrophus* in Virulence and Stress Responses.

Expression of *Medicago truncatula* Genes Responsive to Nitric Oxide in Pathogenic and Symbiotic Conditions.

Expression of Two Functionally Distinct Plant Endo- $\beta$ -1,4-Glucanases Is Essential for the Compatible Interaction Between Potato Cyst Nematode and Its Hosts.

The Root-Colonizing Endophyte *Pirifomopsis indica* Confers Drought Tolerance in *Arabidopsis* by Stimulating the Expression of Drought Stress-Related Genes in Leaves.

NADPH Oxidases Are Involved in Differentiation and Pathogenicity in *Botrytis cinerea*.

Structure of the Glucanase Inhibitor Protein (GIP) Family from *Phytophthora* Species Suggests Coevolution with Plant Endo- $\beta$ -1,3-Glucanases.

Duplication of Plasmid-Borne Nitrite Reductase Gene *nirK* in the Wheat-Associated Plant Growth-Promoting Rhizobacterium *Azospirillum brasilense* Sp245.

Molecular Analysis of Lipoxygenases Associated with Nodule Development in Soybean.

## COMING EVENTS

### 2008

June 22-26

#### **4th EPSO Conference**

Toulon (Côte d'Azur), France

[www.epsoweb.org/catalog/conf2008.htm](http://www.epsoweb.org/catalog/conf2008.htm)

July 14-16

#### **Plant-Associated Microbe Gene Ontology (PAMGO) Training Workshop**

Blacksburg, VA, U.S.A.

[www.cpe.vt.edu/vbi-genome/](http://www.cpe.vt.edu/vbi-genome/)

July 16-18

#### **Oomycete Bioinformatics Workshop**

Blacksburg, VA, U.S.A.

[www.cpe.vt.edu/vbi-genome/](http://www.cpe.vt.edu/vbi-genome/)

July 26-30

#### **The American Phytopathological Society Centennial Meeting**

Minneapolis, MN, U.S.A.

[www.apsnet.org/centennial](http://www.apsnet.org/centennial)

August 17-22

#### **16th Congress of the Federation of European Societies of Plant Biology (FESPB)**

Tampere, Finland

[www.fespb2008.org](http://www.fespb2008.org)

August 18-22

#### **7th International Mycosphaerella and Stagonospora Symposium**

Ascona, Switzerland

[www.path.ethz.ch/news/conferences/Mycosphaerella\\_Ascona\\_2007](http://www.path.ethz.ch/news/conferences/Mycosphaerella_Ascona_2007)

August 20-22

#### **4th International Symposium on Rhizoctonia**

Berlin, Germany

[www.rhizoctonia.org](http://www.rhizoctonia.org)

August 23-24

#### **3rd International *Phytophthora* and *Pythium* Workshop in association with the 9th ICPP**

Torino, Italy

[www.icpp2008.org/workshops\\_det1.php](http://www.icpp2008.org/workshops_det1.php)

August 24-29

#### **9th International Congress of Plant Pathology**

Torino, Italy

[www.icpp2008.org](http://www.icpp2008.org)

August 30-September 2

#### **10th International Fusarium Workshop**

Alghero, Sardinia, Italy

[www.ars.usda.gov/Main/docs.htm?docid=9850](http://www.ars.usda.gov/Main/docs.htm?docid=9850)

August 30-September 3

#### **8th European Nitrogen Fixation Conference**

Ghent, Belgium

<http://nfix2008.psb.ugent.be/>

September 3-4

#### **11th International Symposium on Nitrogen Fixation with Non-Legumes**

Ghent, Belgium

<http://nfix2008.psb.ugent.be/>

November 16-21

#### **10th International Symposium on the Biosafety of Genetically Modified Organisms (ISBGMO)**

Wellington, New Zealand

[www.isbgmo.info](http://www.isbgmo.info)

November 30-December 5

#### **Biotechnology Havana 2008**

Havana, Cuba

<http://bh2008.cigb.edu.cu/home.htm>

### 2009

July 8-10

#### **Plant ROS 2009**

Helsinki, Finland

<http://pog2009.org/>

July 19-23

#### **XIV International Congress on Molecular Plant-Microbe Interactions**

Québec City, Québec, Canada

[www.ismpminet.org/meetings](http://www.ismpminet.org/meetings)

October 25-30

#### **9th International Plant Molecular Biology Congress**

St. Louis, MO, U.S.A.

[www.ipmb2009.org](http://www.ipmb2009.org)

Include your meeting in IS-MPMI's printed and online event calendar. Submit online at [www.ismpminet.org/meetings/calsubmit.asp](http://www.ismpminet.org/meetings/calsubmit.asp).

# Members of the International Society for Molecular Plant-Microbe Interactions

As of April 1, 2008

## A

### Abbruscato, Pamela

CERSA - Parco Tecnologico Padano  
Rice Genomics  
Via Einstein Loc Codazza  
Lodi, 26900  
ITALY  
Tel: 39 37 1466 2623  
Fax: 39 37 1466 2349  
pamela.abbruscato@tecnoparco.org

### Accotto, Gian Paolo

Istituto Di Virologia Vegetale, CNR  
Strada Delle Cacce 73  
Torino, 10135  
ITALY  
Tel: 39 11 397 7285  
Fax: 39 11 343 809  
g.accotto@ivv.cnr.it

### Achar, Premila N.

Kennesaw State Univ  
Biological and Physical Sciences Dept  
1000 Chastain Road, #1202  
Kennesaw, GA 30144  
Tel: (770) 499-3524  
Fax: (770) 423-6625  
pachar@kennesaw.edu

### Adam, Gerhard

Univ of Nat Res & Applied Life  
Sciences  
Inst of Applied Genetics, Cell Biology  
Muthgasse 18/05/66  
Vienna, 1190  
AUSTRIA  
Tel: 43 1 3600 66380  
Fax: 43 1 3600 66392  
gerhard.adam@boku.ac.at

### Adhikari, Tika

North Dakota State Univ  
Plant Pathology Dept  
306 Walster Hall  
Fargo, ND 58105  
Tel: (701) 231-7079  
Fax: (701) 231-7851  
tika.adhikari@ndsu.edu

### Aguilar, Mario O.

Univ Nacl de La Plata  
Quimica Biologica  
Fac Cien Ex  
La Plata BA, 1900  
ARGENTINA  
Tel: 54 221 425 0497  
Fax: 54 221 422 6947  
aguilar@biol.unlp.edu.ar

### Akimitsu, Kazuya

Kagawa Univ  
Fac of Agric - Life Sciences Dept  
Miki-cho  
Kagawa-ken, 761-0795  
JAPAN  
Tel: 81 87 891 3131  
Fax: 81 87 891 3021  
kazuya@ag.kagawa-u.ac.jp

### Allersma, Ton

De Ruiter Zonen Seeds  
Research Dept  
Leeuwenhoekweg 52  
Bergschenhoek, 2661 CZ  
NETHERLANDS  
Tel: 31 10 529 2222  
Fax: 31 10 529 2410  
carla.schoonus@deruiterseeds.com

### Alvarez-Morales, Ariel

Cinvestav-IPN  
Plant Genetic Eng - Apdo Postal 629  
Km 9.6 Lib. Norte Carret. Irapuato-Leon  
Irapuato GTO, 36500  
MEXICO  
Tel: 52 462 623 9600  
Fax: 52 462 624 5849  
aalvarez@ira.cinvestav.mx

### Ane, Jean-Michel M.

Univ of Wisconsin  
Agronomy Dept - 219 Moore Hall  
1575 Linden Dr  
Madison, WI 53706  
Tel: (608) 890-0155  
Fax: (608) 262-5217  
jane@wisc.edu

### Aneja, Punita

EMD Crop Bioscience Inc  
16 Waldie Ave  
Milton, ON L9T 5M9  
CANADA  
Tel: (905) 875-3277  
anejap@gmail.com

### Antoun, Hani H.

Univ Laval  
2110 Pavillon de L'Environnement  
Quebec, QC G1K 7P4  
CANADA  
Tel: (418) 656-2131x3650  
Fax: (418) 656-7871  
hani.antoun@fsaa.ulaval.ca

### Argueso, Cristiana M. G. T.

Univ of North Carolina  
Biology Dept  
309 Coker Hall  
Chapel Hill, NC 27510  
Tel: (919) 962-2273  
Fax: (919) 962-1625  
ca@email.unc.edu

### Arima, Yasuhiro

Tokyo Univ of Agric & Tech  
Faculty of Agriculture  
Fuchu, Tokyo, 183-8509  
JAPAN  
Tel: 81 42 367 5677  
Fax: 81 42 367 5677  
arima@cc.tuat.ac.jp

### Asano, Tomoya

Kanazawa Univ  
Div of Functional Genomics  
13-1 Takaramachi - ASRC  
Kanazawa, 920-0934  
JAPAN  
Tel: 81 76 265 2772  
Fax: 81 76 234 4536  
asano@pop01.kanazawa-u.ac.jp

### Avila-Adame, Cruz

Rivas Laboratorios  
105 Cambridge Ave  
Saddle Brook, NJ 07663  
Tel: 52 461 123 4313  
avilaadame@yahoo.com

### Avrova, Anna O.

Scottish Crop Research Inst  
Plant Pathology Dept  
Invergowrie  
Dundee, DD2 5DA  
UNITED KINGDOM  
Tel: 44 1382 562 731  
Fax: 44 1382 568 578  
anna.avrova@scri.ac.uk

### Aziz, Aziz

Univ of Reims  
URVVC EA 2069 - PPDD  
BP 1039 - Moulin De La Housse  
Reims, CEDEX 2, 51687  
FRANCE  
Tel: 33 3 2691 8525  
aziz.aziz@univ-reims.fr

## B

### Baker, Barbara J.

USDA PEGEC  
800 Buchanan Street  
Albany, CA 94710-1105  
Tel: (510) 559-5912  
Fax: (510) 559-5929  
bbaker@socrates.berkeley.edu

### Baker, Christina M.

Oklahoma State Univ  
Entomology and Plant Pathology Dept  
127 Noble Research Center  
Stillwater, OK 74078-0001  
Tel: (405) 744-8268  
chickadee41780@aol.com

### Bakker, Peter A. H. M.

Utrecht Univ  
Plant Pathology Dept  
PO Box 80084  
Utrecht, 3508 TB  
NETHERLANDS  
Tel: 31 30 253 6861  
Fax: 31 30 251 8366  
p.a.h.m.bakker@bio.uu.nl

### Bakkeren, Guus

Agric & Agri-Food Canada  
Pacific Agri-Food Research Centre  
Hwy 97 - Box 5000  
Summerland, BC V0H 1Z0  
CANADA  
Tel: (250) 494-6368  
Fax: (250) 494-0755  
bakkereng@agr.gc.ca

### Balestrini, Raffaella Maria

Univ of Torino  
CNR - Inst of Plant Protection  
Viale Mattioli 25  
Torino, 10125  
ITALY  
Tel: 39 11 650 2927  
Fax: 39 11 670 5962  
r.balestrini@ipp.cnr.it

### Banerjee, Manas R.

Brett Young  
Research & Development  
PO Box 99, St Norbert Postal Station  
Winnipeg, MB R3V 1L5  
CANADA  
Tel: (204) 478-2238  
Fax: (204) 261-8872  
manas.banerjee@brettyoung.ca

### Banta, Lois M.

Williams College  
Biology Dept  
Williamstown, MA 01267  
Tel: (413) 597-4330  
Fax: (413) 597-3495  
lbanta@williams.edu

### Barash, Isaac

Tel Aviv Univ  
Plant Sciences Dept  
Tel Aviv, 69978  
ISRAEL  
Tel: 972 3 640 6251  
Fax: 972 3 640 9380  
isaaci@post.tau.ac.il

### Barnett, Melanie

Stanford Univ  
Biological Sciences Dept  
Stanford, CA 94305-6004  
Tel: (650) 723-0954  
Fax: (650) 725-8309  
melbar@stanford.edu

### Bauer, Wolfgang D.

Univ of California  
Plant Sciences Dept  
1 Shields Ave  
Davis, CA 95616  
Tel: (530) 752-8810  
bauer.7@osu.edu

Visit [www.ismpminet.org/members/ssmemsearch.cfm](http://www.ismpminet.org/members/ssmemsearch.cfm) for online access to the directory. To change your contact information, complete the form at [www.ismpminet.org/members/update.asp](http://www.ismpminet.org/members/update.asp)



**Baum, Thomas J.**

Iowa State Univ  
Plant Pathology Dept  
351 Bessey Hall  
Ames, IA 50011-1020  
Tel: (515) 294-2398  
Fax: (515) 294-9420  
tbaum@iastate.edu

**Beachy, Roger N.**

Donald Danforth Plant Science Ctr  
975 N Warson Road  
St Louis, MO 63132  
Tel: (314) 587-1201  
Fax: (314) 587-1964  
rnbeachy@danforthcenter.org

**Beattie, Gwyn A.**

Iowa State Univ  
Microbiology Dept  
207 Science I  
Ames, IA 50011  
Tel: (515) 294-5571  
Fax: (515) 294-6019  
gbeattie@iastate.edu

**Becana, Manuel**

CSIC  
Est Experimental De Aula Dei  
Apdo 202 - Avda Montanana 177  
Zaragoza, 50080  
SPAIN  
Tel: 34 976 716 055  
Fax: 34 976 716 145  
becana@eead.csic.es

**Beffa, Roland**

Bayer CropScience  
14-20 Rue Pierre Baizet  
Lyon, 69009  
FRANCE  
Tel: 33 472 852 935  
Fax: 33 472 852 297  
roland.beffa@bayercropscience.com

**Bender, Carol L.**

Oklahoma State Univ  
Entomology and Plant Pathology Dept  
127 Noble Research Center  
Stillwater, OK 74078-3033  
Tel: (405) 744-9945  
Fax: (405) 744-7373  
cbender@okstate.edu

**Bent, Andrew F.**

Univ of Wisconsin  
Plant Pathology Dept  
1630 Linden Dr  
Madison, WI 53706-1598  
Tel: (608) 265-3034  
Fax: (608) 263-2626  
afb@plantpath.wisc.edu

**Berger, David K.**

Univ of Pretoria  
Botany Dept  
Agric Science Bldg, Room 6-26  
Pretoria, 0002  
REP OF SOUTH AFRICA  
Tel: 27 12 420 4634  
Fax: 27 12 420 3947  
dave.berger@fabi.up.ac.za

**Berman, Phyllis M.**

Univ of Massachusetts  
Plant, Soil and Insect Sciences Dept  
209C Fernald Hall  
Amherst, MA 01003  
Tel: (413) 545-2364  
Fax: (413) 545-3075  
berman@psis.umass.edu

**Beuzon Lopez, Carmen R.**

Univ of Malaga  
Cellular Biology & Genetics Dept  
Campus Univ Teatinos  
Malaga, 29071  
SPAIN  
Tel: 34 952 131 959  
Fax: 34 952 132 001  
cbl@uma.es

**Bhattacharyya, Madan Kumar**

Iowa State Univ  
Agronomy Dept  
G303 Agronomy Hall  
Ames, IA 50011-1010  
Tel: (515) 294-2505  
Fax: (515) 294-2299  
mbhattac@iastate.edu

**Bird, David M.**

North Carolina State Univ  
Box 7616 - Plant Pathology Dept  
3415 Gardner Hall  
Raleigh, NC 27695-7616  
Tel: (919) 515-6813  
Fax: (919) 515-9500  
david\_bird@ncsu.edu

**Blok, Vivian C.**

Scottish Crop Research Inst  
Mycology, Bacteriology and  
Nematology  
Invergowrie  
Dundee, DD2 5DA  
UNITED KINGDOM  
Tel: 44 1382 562 731  
Fax: 44 1382 562 426  
vblok@scri.sari.ac.uk

**Boch, Jens**

Martin Luther Univ  
Inst of Genetics  
Weinbergweg 10  
Halle (Saale), 06099  
GERMANY  
Tel: 49 345 552 6292  
Fax: 49 345 552 7151  
boch@genetik.uni-halle.de

**Bogdanove, Adam J.**

Iowa State Univ  
Plant Pathology Dept  
351 Bessey Hall  
Ames, IA 50011-1020  
Tel: (515) 294-3421  
Fax: (515) 294-9420  
ajbog@iastate.edu

**Bonas, Ulla**

Martin Luther Univ  
Inst of Genetics  
Weinbergweg 10  
Halle, D-06120  
GERMANY  
Tel: 49 345 55 26290  
Fax: 49 345 55 27277  
bonas@genetik.uni-halle.de

**Boonekamp, Piet M.**

Plant Research International  
Biointeractions & Plant Health  
PO Box 16 - Droevendaalsesteeg  
Wageningen, 6700 AA  
NETHERLANDS  
Tel: 31 317 476 178  
Fax: 31 317 477 261  
piet.boonekamp@wur.nl

**Bos, Jorunn I. B.**

7 Fernhill  
Norwich, Norfolk, NR1 4AQ  
UNITED KINGDOM  
jorunn.bos@sainsbury-laboratory.ac.uk

**Bosco, Marco**

Univ Di Bologna  
Dip Sci Tec Agroambientali  
Viale Fanin 42-44  
Bologna, 40127  
ITALY  
Tel: 39 051 209 6270  
Fax: 39 051 209 6274  
marco.bosco@unibo.it

**Botha-Oberholster, Anna-Maria**

Univ of Pretoria  
Genetics and FABI Dept  
74 Hunan Road  
Pretoria, 0002  
REP OF SOUTH AFRICA  
Tel: 27 12 420 3945  
Fax: 27 12 420 3945  
ambthao@postino.up.ac.za

**Bots, Marc**

Bayer Bioscience N.V.  
Research Dept  
Technologiepark 38  
Belgium, 9052  
BELGIUM  
Tel: 32 9 243 0556  
Fax: 32 9 383 6731  
marc.bots@bayercropscience.com

**Boucher, Christian A.**

INRA  
LIPM  
Chemin de Borde Rouge Auzeville  
Castanet, Tolosan, 31650  
FRANCE  
Tel: 33 561 285 504  
Fax: 33 561 285 061  
boucher@toulouse.inra.fr

**Bouwmeester, Klaas**

Wageningen Univ  
Laboratory of Phytopathology  
Binnenhaven 5  
Wageningen, 6709 PD  
NETHERLANDS  
Tel: 31 317 483 403  
Fax: 31 317 483 412  
klaas.bouwmeester@wur.nl

**Burdman, Saul**

Hebrew Univ of Jerusalem  
Plant Pathology and Microbiology Dept  
Food and Environmental Quality  
Sciences  
Rehovot, 76100  
ISRAEL  
Tel: 972 8 948 9369  
Fax: 972 8 946 6794  
saulb@agri.huji.ac.il

**Burketova, Lenka**

Inst Experimental Botany CAS  
Na Karlovce 1a  
Prague, 16000  
CZECH REPUBLIC  
Tel: 420 2 2431 0108  
Fax: 420 2 2431 0113  
burketova@ueb.cas.cz

**Byun, Myung Ok**

Natl Inst of Agricultural Biotechnology  
Molecular Physiology Dept  
Suwon, 441-707  
KOREA  
Tel: 82 31 299 1737  
Fax: 82 31 299 1722  
mobyun@rda.go.kr

**C****Cabral, Adriana**

Utrecht Univ  
Plant-Microbe Interactions  
Padualaan 8  
Utrecht, 3584 CH  
NETHERLANDS  
a.dacruzcabral@bio.uu.nl

**Cai, Daguang**

Univ Kiel  
Molecular Phytopathology  
Hermann-Rodewald-stasse 9  
Kiel, 24118  
GERMANY  
Tel: 49 431 880 3215  
Fax: 49 431 880 1583  
dcai@phytomed.uni-kiel.de

**Camara-Machado, Margit Laimer**

Univ of Vienna  
Inst of Applied Microbiology  
Muthgasse 18  
Vienna, A-1190  
AUSTRIA  
Tel: 43 136 006 6560  
Fax: 43 136 97615  
m.laimer@iam.boku.ac.at

**Cameron, Robin K.**

McMaster Univ  
Biology Dept  
1280 Main Street W  
Hamilton, ON L8S 4K1  
CANADA  
Tel: (905) 525-9140x26345  
Fax: (905) 522-6066  
rcamero@mcmaster.ca

**Caprari, Claudio**

Univ of Molise  
Dip S.T.A.T.  
Loc Fonte Lappone  
Pesche (IS), 86090  
ITALY  
Tel: 39 86 526 103  
Fax: 39 86 4991 2446  
claudio.caprari@unimol.it

**Cardinale, Francesca C.**

Univ of Torino  
Di Va P.R.A. - Plant Pathology Dept  
Via Leonardo Da Vinci, 44  
Grugliasco, TO, 10095  
ITALY  
Tel: 39 11 670 8875  
Fax: 39 11 670 8541  
francesca.cardinale@unito.it

**Carlson, Russell W.**

Univ of Georgia  
Complex Carbohydrate Research Center  
315 Riverbend Road  
Athens, GA 30602  
Tel: (706) 542-4439  
Fax: (706) 542-4412  
rcarlson@ccrc.uga.edu

**Century, Karen S.**

Mendel Biotechnology  
21375 Cabot Blvd  
Hayward, CA 94545  
Tel: (510) 259-6143  
Fax: (510) 264-0254  
kcentury@mendelbio.com

**Cervone, Felice**

Univ La Sapienza  
Biology Vegetale Dept  
Piazzale Aldo Moro 5  
Rome, 00185  
ITALY  
Tel: 39 6 4991 2641  
Fax: 39 6 4991 2446  
felice.cervone@uniroma1.it

**Cevik, Volkan**

Warwick Univ  
Warwick - HRI  
Wellesbourne  
Warwick, CV35 9EF  
UNITED KINGDOM  
Tel: 44 2476 575 249  
volkan.cevik@warwick.ac.uk

**Chakravarthy, Suma**

Boyce Thompson Inst  
Plant Research  
Tower Road  
Ithaca, NY 14853  
Tel: (607) 254-1386  
Fax: (607) 255-6695  
sc289@cornell.edu

**Chapman, Helen C.**

John Innes Centre  
Sainsbury Laboratory  
Colney Lane  
Norwich, NR4 7UH  
UNITED KINGDOM  
Tel: 44 1603 450 400  
Fax: 44 1603 450 011  
helen.chapman@tsl.ac.uk

**Charkowski, Amy O.**

Univ of Wisconsin  
Plant Pathology Dept  
1630 Linden Dr  
Madison, WI 53706-1598  
Tel: (608) 262-7911  
Fax: (608) 263-2626  
amyc@plantpath.wisc.edu

**Charles, Trevor C.**

Univ of Waterloo  
Biology Dept  
200 University Ave West  
Waterloo, ON N2L 3G1  
CANADA  
Tel: (519) 888-4567x35606  
Fax: (519) 746-0614  
tcharles@uwaterloo.ca

**Che, Fang-Sik**

Nagahama Inst of Bio-Science & Tech  
Grad School of BioScience  
1266, Tamura-cho  
Nagahama, Shiga, 526-0829  
JAPAN  
Tel: 81 749 64 8162  
Fax: 81 749 64 8140  
k\_sai@nagahama-i-bio.ac.jp

**Chen, Chao-Ying**

Natl Taiwan Univ  
Plant Pathology and Microbiology Dept  
Taipei,  
TAIWAN REP OF CHINA  
Tel: 886 2 3366 5207  
Fax: 886 2 2365 7735  
cychen@ntu.edu.tw

**Chen, Ruey-Shyang**

Natl Chiayi Univ  
Grad Inst of Biotechnology  
300 University Road  
Chiayi, 600  
TAIWAN REP OF CHINA  
Tel: 886 5 271 7897  
Fax: 886 5 275 0396  
rschen@mail.ncyu.edu.tw

**Chernin, Leonid**

Hebrew Univ of Jerusalem  
Plant Path & Microbiology Dept  
POB 12 - Hertze Str.  
Rehovot, 76100  
ISRAEL  
Tel: 972 8 948 9128  
Fax: 972 8 936 3882  
chernin@agri.huji.ac.il

**Chet, Ilan**

Hebrew Univ  
Faculty of Agric  
PO Box 26  
Rehovot, 76100  
ISRAEL  
Tel: 972 8 934 3951  
Fax: 972 8 934 4100  
chet@huji.ac.il

**Chibucos, Marcus C.**

VPI & State Univ  
Washington Street - MC0477  
Blacksburg, VA 24061  
Tel: (540) 231-2484  
Fax: (540) 231-2606  
mchibuco@vbi.vt.edu

**Chisholm, Stephen T.**

Colorado State Univ  
Bioagric Sciences Dept  
C129 Plant Sciences Bldg  
Fort Collins, CO 80523-1177  
Tel: (970) 491-6824  
stephen.chisholm@colostate.edu

**Cillo, Fabrizio**

CNR - Ist Di Virologia Vegetale  
Protezione Piante E Microbiologia  
Applic  
Via G. Amendola 165/A  
Bari, 70126  
ITALY  
Tel: 39 80 544 3109  
Fax: 39 80 544 2911  
f.cillo@ba.ivv.cnr.it

**Clough, Steven J.**

Univ of Illinois  
USDA ARS  
1101 W Peabody Dr  
Urbana, IL 61801  
Fax: (217) 265-6452  
sjclough@uiuc.edu

**Coaker, Gitta L.**

Univ of California  
Plant Pathology Dept  
354 Hutchison Hall  
Davis, CA 95616  
Tel: (530) 750-1976  
gitta@nature.berkeley.edu

**Cocking, Edward C.**

Univ of Nottingham  
Crop Nitrogen Fixation Centre  
Univ Park - Life Science Dept  
Nottingham, NG7 2RD  
UNITED KINGDOM  
Tel: 44 1159 513 056  
Fax: 44 1159 513 240

**Collmer, Alan**

Cornell Univ  
Plant Pathology Dept  
334 Plant Science Bldg  
Ithaca, NY 14853-4203  
Tel: (607) 255-7843  
Fax: (607) 255-4471  
arc2@cornell.edu

**Collmer, Candace W.**

Wells College  
Biological & Chemical Sciences Dept  
Route 90 - Main Street  
Aurora, NY 13026  
Tel: (315) 364-3271  
Fax: (315) 364-3464  
ccollmer@wells.edu

**Collonnier, Cecile**

GEVES  
Scientific Coordination  
la Miniere  
Guyancourt, 78285  
FRANCE  
Tel: 33 1 3083 3005  
cecile.collonnier@geves.fr

**Conejero, Tomas Vicente**

Univ Politecnica De Valencia  
Inst De Biologia Mol Celular De Plantas  
Camino De Vera S/N  
Valencia, 46022  
SPAIN  
Tel: 34 6 387 7850  
Fax: 34 6 387 7859  
vconejero@ibmcp.upv.es

**Conrath, Uwe**

RWTH Aachen Univ  
Plant Biochemistry & Molecular Biology  
Worringerweg 1  
Aachen, 52074  
GERMANY  
Tel: 49 241 802 6540  
Fax: 49 241 802 2181  
uwe.conrath@bio3.rwth-aachen.de

**Coram, Tristan E.**

Washington State Univ  
USDA ARS - WGQPDR  
209 Johnson Hall  
Pullman, WA 99164  
Tel: (509) 335-1596  
coram@wsu.edu

**Culver, James N.**

Univ of Maryland  
Ctr for Agricultural Biotechnology  
5115 Plant Science Building  
College Park, MD 20742-0001  
Tel: (301) 405-2912  
Fax: (301) 314-9075  
jculver@umd.edu

**Cuppels, Diane A.**

Agric & Agri-Food Canada  
Southern Crop Prot and Food Res Ctr  
1391 Sandford St  
London, ON N5V 4T3  
CANADA  
Tel: (519) 457-1470x274  
Fax: (519) 457-3997  
cuppelsd@agr.gc.ca

**D****D'Haese, Wim**

Scripps Research Inst  
Chemistry Dept - BCC265  
10550 N Torrey Pines Road  
La Jolla, CA 92037-1000  
Tel: (858) 784-9601  
Fax: (858) 784-9610  
wim@scripps.edu

**D'Ovidio, Renato**

Univ of Tuscia  
Agrobiology & Agrochemistry Dept  
Via San Camillo De Lellis  
Viterbo, IT-01100  
ITALY  
Tel: 39 761 357 323  
Fax: 39 761 357 238  
dovidio@unitus.it

**Damasceno, Cynthia M. B.**

Cornell Univ  
Plant Pathology Dept  
228 Plant Science Building  
Ithaca, NY 14853  
Tel: (607) 255-7730  
Fax: (607) 255-5407  
cmd59@cornell.edu

**Dangl, Jeff L.**

Univ of North Carolina  
Biology Dept  
Coker Hall 108 - CB 3280  
Chapel Hill, NC 27599-3280  
Tel: (919) 962-5624  
Fax: (919) 962-1625  
dangl@email.unc.edu

**Dardick, Chris**

USDA ARS AFRS  
2217 Wiltshire Road  
Kearneysville, WV 25442  
Tel: (304) 725-3451  
chris.dardick@ars.usda.gov

**Daub, Margaret E.**

North Carolina State Univ  
Botany Dept  
2214 Gardner Hall - Box 7612  
Raleigh, NC 27695-7612  
Tel: (919) 513-3807  
Fax: (919) 515-3436  
margaret\_daub@ncsu.edu

**Davis, Eric L.**

North Carolina State Univ  
Plant Pathology Dept  
840 Method Rd - Unit 4 Bldg -  
Box 7903  
Raleigh, NC 27607  
Tel: (919) 515-6692  
Fax: (919) 513-1279  
eric\_davis@ncsu.edu

**Dazzo, Frank B.**

Michigan State Univ  
Microbiology and Molecular Genetics  
East Lansing, MI 48824  
Tel: (517) 355-6463x1587  
Fax: (517) 353-8953  
dazzo@msu.edu

**De Vicente, Antonio**

Univ of Malaga  
Faculty Ciencias Microbiologia  
Campus Univ Teatinos  
Malaga, ES-29071  
SPAIN  
Tel: 34 952 131 892  
Fax: 34 952 132 000  
adevicente@uma.es

**Debreczeny, Monika**

Bay Zoltan Foundation  
Kazopfasor 41  
Szeged, 6726  
HUNGARY  
Tel: 36 62 546 976  
Fax: 36 62 546 974  
debreczeny@baygen.hu

**Denarie, Jean**

CNRS INRA LIPM  
BP 52627  
Castanet  
Tolosan Cedex, 31326  
FRANCE  
Tel: 33 56 128 5050  
Fax: 33 56 128 5061  
jean.denarie@toulouse.inra.fr

**Denby, Katherine J.**

Univ of Warwick  
Warwick HRI  
Wellesbourne, Warks, CV35 9EF  
UNITED KINGDOM  
Tel: 44 24 7657 5097  
Fax: 44 24 7657 4500  
k.j.denby@warwick.ac.uk

**Deng, Wen-Ling**

Natl Chung Hsing Univ  
Plant Pathology Dept  
250 Kuo Kuang Road  
Taichung, 402  
TAIWAN REP OF CHINA  
Tel: 886 4 2284 0780x375  
Fax: 886 4 2287 7585  
wenling15@hotmail.com

**Dessaux, Yves**

CNRS  
Inst des Sciences Vegetales  
Ave de la Terrasse  
Gif Sur Yvette, 91198  
FRANCE  
Tel: 33 1 6982 3690  
Fax: 33 1 6982 3695  
yves.dessaux@isv.cnrs-gif.fr

**Desveaux, Darrell**

Univ of Toronto  
Cell & Systems Biology Dept  
25 Willcocks St - Rm 3068 Earth Sci Ctr  
Toronto, ON M5S 3B2  
CANADA  
Tel: (416) 978-7153  
Fax: (416) 978-5878  
desveaux@csb.utoronto.ca

**de Wit, Pierre J.**

Wageningen Univ  
Laboratory of Phytopathology  
Binnenhaven 5  
Wageningen, 6709 PD  
NETHERLANDS  
Tel: 31 317 483 130  
Fax: 31 317 483 412  
pierre.dewit@wur.nl

**Di Pietro, Antonio C.**

Univ De Cordoba  
Genetica Dept - Campus Rabanales  
Edificio Gregor Mendel  
Cordoba, 14071  
SPAIN  
Tel: 34 9 5721 8981  
Fax: 34 9 5721 2072  
ge2dipia@uco.es

**Dickstein, Rebecca**

Univ of North Texas  
Biological Sciences Dept  
PO Box 305220  
Denton, TX 76203-5220  
Tel: (940) 565-3359  
Fax: (940) 565-3821  
beccad@unt.edu

**Ding, Xinshun**

Samuel Roberts Noble Foundation  
PO Box 2180 - Plant Biology Div  
2510 Sam Noble Pkwy  
Ardmore, OK 73402  
Tel: (580) 224-6600  
Fax: (580) 224-6692  
xsding@noble.org

**Ding, Biao**

Ohio State Univ  
Plant Cellular and Molecular Biology  
207 Rightmire Hall - 1060 Carmack Rd  
Columbus, OH 43210  
Tel: (614) 247-6077  
Fax: (614) 292-5379  
ding.35@osu.edu

**Dodds, Peter**

CSIRO  
Division of Plant Industry  
GPO Box 1600  
Canberra, ACT 2601  
AUSTRALIA  
Tel: 61 2 6246 5039  
Fax: 61 2 6246 5000  
peter.dodds@csiro.au

**Dorjgotov, Dulguun**

Inst for Plant Genomics  
Human Biotech & Bioenergy  
Derkovits Faszor 2  
Szeged, 6726  
HUNGARY  
Tel: 36 62 546 974  
Fax: 36 62 546 974  
dorjgotovd@baygen.hu

**Doty, Sharon L.**

Univ of Washington  
College of Forest Resources  
Box 352100  
Seattle, WA 98195-2100  
Tel: (206) 616-6255  
Fax: (206) 543-3254  
sldoty@u.washington.edu

**Dow, Max**

Natl Univ of Ireland  
Microbiology Dept  
College Road  
Cork,  
IRELAND  
Tel: 353 21 490 1316  
Fax: 353 21 427 5934  
m.dow@ucc.ie

**Downie, J. Allan**

John Innes Centre  
Colney Lane  
Norwich, NR4 7UH  
UNITED KINGDOM  
Tel: 44 1603 45 0207  
Fax: 44 1603 450 045  
allan.downie@bbsrc.ac.uk

**Driscoll, Brian T.**

McGill Univ  
MacDonald Campus - NRS Dept  
21,111 Lakeshore Road  
SteAnneDeBellevue, QC H9X 3V9  
CANADA  
Tel: (514) 398-7887  
Fax: (514) 398-7990  
brian.driscoll@mcgill.ca

**Dry, Ian B.**

CSIRO Plant Industry  
Hartley Grove - Horticulture Unit  
PO Box 350  
Glen Osmond, SA 5064  
AUSTRALIA  
Tel: 61 8 8303 8632  
Fax: 61 8 8303 8601  
ian.dry@csiro.au

**Dudler, Robert K.**

Univ of Zurich  
Inst of Plant Biology  
Zollikerstr 107  
Zurich, 8008  
SWITZERLAND  
Tel: 41 1 634 8252  
Fax: 41 1 634 8204  
rdudler@botinst.unizh.ch

**Duplessis, Sebastien**

INRA  
UMR 1136 IAM  
Champagnoux, 54280  
FRANCE  
Tel: 33 383 394 013  
Fax: 33 383 394 069  
duplessi@nancy.inra.fr

**E****Ekrמודdollah, Abul K. M.**

Canadian Forest Service  
Pacific Forestry Centre  
506 West Burnside Road  
Victoria, BC V8Z 1M5  
CANADA  
Tel: (250) 363-0692  
Fax: (250) 363-0775  
aekramod@pfc.cfs.nrcan.gc.ca

**Ellerstrom, Mats Otto**

Goteborg Univ  
Plant and Environmental Sciences  
Box 461  
Goteborg, SE-4050  
SWEDEN  
Tel: 46 31 786 4806  
mats.ellerstrom@botany.gu.se

**Elmerich, Claudine**

Inst Pasteur  
BMGE - Microbiologie Dept  
25 Rue Du Dr Roux  
Paris, 75728  
FRANCE  
Tel: 33 1 4061 3495  
Fax: 33 1 4568 8184  
elmerich@pasteur.fr

**Emerich, David W.**

Univ of Missouri  
Biochemistry Dept  
117 Schweitzer  
Columbia, MO 65211-0001  
Tel: (573) 882-4252  
Fax: (573) 882-5635  
emerichd@missouri.edu

**Epel, Bernard L.**

Tel Aviv Univ  
Plant Sciences Dept  
Ramat Aviv  
Tel Aviv, 69978  
ISRAEL  
Tel: 972 3 640 8598  
Fax: 972 3 951 2963  
blepel@post.tau.ac.il

**Escobar, Carolina**

Univ De Castilla La Mancha  
Ciencias Ambientales (Envl Sciences)  
Audo Carlos III  
Toledo, 45071  
SPAIN  
Tel: 34 925 26 8800x5476  
Fax: 34 925 26 8840  
carolina.escobar@uclm.es

**Esquerre-Tugay, Marie Therese**

Univ Paul Sabatier  
Pole Biotech Veg - UMR 5546 CNRS  
24 Chemin De Borde Rouge  
Castanet Tolosan, 31326  
FRANCE  
Tel: 33 5 6219 3519  
Fax: 33 5 6219 3502  
esquerre@scsv.uprs-tlse.fr

**Expert, Dominique**

CNRS INRA  
Lab De Pathologie Vegetale  
16 Rue Claude Bernard  
Paris, 75005  
FRANCE  
Tel: 33 1 4408 1706  
Fax: 33 1 4408 1631  
expert@agroparistech.fr

**F****Fanelli, Corrado**

Univ La Sapienza  
Plant Biology Dept  
Largo Cristina Di Svevia 24  
Rome, 00165  
ITALY  
Tel: 39 338 930 4288  
Fax: 39 6 683 3878  
corrado.fanelli@uniroma1.it



**Faure, Denis**

CNRS - Inst Sciences Vegetal  
UPR 2355  
Ave De La Terrasse  
Gif Sur Yvette, 91198  
FRANCE  
Tel: 33 1 6982 3577  
Fax: 33 1 6982 3695  
faure@isv.cnrs-gif.fr

**Felix, Georg**

Univ Tubingen  
Plant Biochemistry Dept  
Auf Der Morgenstelle 5  
Tuebingen, D-72076  
GERMANY  
Tel: 49 7071 297 6672

**Fellers, John P.**

Kansas State Univ  
USDA ARS - Plant Pathology Dept  
4006 Throckmorton Hall  
Manhattan, KS 66506  
Tel: (785) 532-2367  
Fax: (785) 532-6167  
jpf@pseru.ksu.edu

**Ferreira Dos Santos, Patricia  
Conceicao**

Stockholm Univ  
Botany Dept - Plant Physiology  
Lilla Frescativagen 5  
Stockholm, 106 91  
SWEDEN  
Tel: 46 8 163 760  
Fax: 46 8 165 525  
patriciaferreirasantos@gmail.com

**Finan, Turlough M.**

McMaster Univ  
LSB 539 - Biology Dept  
1280 Main Street W  
Hamilton, ON L8S 4L6  
CANADA  
Tel: (905) 525-9140  
Fax: (905) 521-2955  
finan@mcmaster.ca

**Fliegmann, Judith**

UMR UPS CNRS 5546  
Pole de Biotech Veg - BP 42617  
Auzeville  
24, Chemin de Borde Rouge  
Castanet Tolosan, 31326  
FRANCE  
Tel: 33 562 193 557  
Fax: 33 562 193 502  
fliegmann@scsv.ups-tlse.fr

**Fluhr, Robert**

Weizmann Inst of Science  
Plant Sciences Dept  
PO Box 26  
Rehovot, 76100  
ISRAEL  
Tel: 972 8 934 2175  
Fax: 972 8 934 4181  
robert.fluhr@weizmann.ac.il

**Franken, Philipp**

Inst for Vegetable & Ornamental Crops  
IGZ - Plant Nutrition Dept  
Theodor-Echtermeyer-Weg 1  
Grossbeeren, 14979  
GERMANY  
Tel: 49 3370 178 215  
Fax: 49 3370 155 391  
franken@igzev.de

**Frederick, Reid**

USDA ARS FDWSRU  
1301 Ditto Avenue  
Ft Detrick, MD 21702-5023  
Tel: (301) 619-7386  
Fax: (301) 619-2880  
reid.frederick@ars.usda.gov

**Freedman, Roger P.**

Mediant  
19/21 Miller's Yard  
10/11 Mill Lane  
Cambridge, CB2 1RQ  
UNITED KINGDOM  
Tel: 44 122 336 9936  
Fax: 44 122 346 4113  
rpf@mediant.co.uk

**Frettinger, Patrick**

Gembloux Agric Univ  
Plant Biology Unit  
Passage Des Deportes, 2  
Gembloux, 5030  
BELGIUM  
Tel: 32 81 62 2455  
Fax: 32 81 60 0727  
frettinger@yahoo.fr

**Frugoli, Julia A.**

Clemson Univ  
Genetics, Biochem, Life Science Studies  
100 Jordon Hall  
Clemson, SC 29634  
Tel: (864) 656-1859  
Fax: (864) 656-0393  
jfrugol@clemson.edu

**Fry, William E.**

Cornell Univ  
Plant Pathology Dept  
334 Plant Science Bldg  
Ithaca, NY 14853-4203  
Tel: (607) 255-4677  
Fax: (607) 255-3679  
wef1@cornell.edu

**Funnell, Deanna L.**

USDA ARS  
Grain, Forage and Bioenergy Res  
Univ of Nebraska - 344 Keim Hall  
Lincoln, NE 68583-0937  
Tel: (402) 472-9099  
Fax: (402) 472-4020  
dfunnell2@unl.edu

**G****Gabriel, Dean W.**

Univ of Florida  
Plant Pathology Dept  
1453 Fifield Hall  
Gainesville, FL 32611  
Tel: (352) 392-7239  
Fax: (352) 392-6532  
gabriel@biotech.ufl.edu

**Gao, Lingling**

CSIRO Plant Industry  
Private Bag #5  
Wembley, WA 6913  
AUSTRALIA  
Tel: 61 8 9333 6624  
Fax: 61 8 9387 8991  
lingling.gao@csiro.au

**Gao, Zhihuan**

Univ of South Carolina  
Biological Sciences Dept  
700 Sumter Street  
Columbia, SC 29208  
Tel: (803) 777-7030  
Fax: (951) 961-9388  
zgao@biol.sc.edu

**Garcia-Luque, Isabel I.**

CSIC  
Plant Biology Dept  
Ramiro de Maeztu No 13  
Madrid, 280 040  
SPAIN  
Tel: 34 1 837 3112  
Fax: 34 1 536 0432  
igarcia@cib.csic.es

**Gassmann, Walter**

Univ of Missouri  
Plant Sciences Division  
371C Life Sciences Center  
Columbia, MO 65211-7310  
Tel: (573) 884-7703  
Fax: (573) 884-9676  
gassmannw@missouri.edu

**Gelvin, Stanton B.**

Purdue Univ  
Biological Sciences Dept  
Lilly Hall of Life Sciences  
West Lafayette, IN 47907  
Tel: (765) 494-4939  
Fax: (765) 496-1496  
gelvin@bilbo.bio.purdue.edu

**Georgi, Laura L.**

Clemson Univ  
Genetics and Biochemistry Dept  
100 Jordan Hall  
Clemson, SC 29634-0001  
Tel: (864) 656-3060  
Fax: (864) 656-6879  
georgil@clemson.edu

**Gianinazzi, Silvio**

INRA CNRS  
UMR INRA/Univ BBCE-IPM  
BP 86510 - Centre De Dijon  
Dijon, CEDEX, 21065  
FRANCE  
Tel: 33 38 069 3146  
Fax: 33 38 069 3753  
silvio@dijon.inra.fr

**Gijzen, Mark**

Agric & Agri-Food Canada  
1391 Sandford Street  
London, ON N5V 4T3  
CANADA  
Tel: (519) 457-1470x280  
Fax: (519) 457-3997  
gijzenm@agr.gc.ca

**Gilijamse, Eelco**

Rijk Zwaan BV  
Zaadteelt and Zaadhandel BV  
PO Box 40  
De Lier, 2678 ZG  
NETHERLANDS  
Tel: 31 17 453 2300  
Fax: 31 17 451 8243  
e.gilijamse@rijkszwaan.nl

**Gilroy, Eleanor**

Scottish Crop Research Inst  
Plant Pathogen Interactions  
Errol Road, Invergowrie  
Dunee, DD2 5DA  
UNITED KINGDOM  
Tel: 44 1382 562 731  
Fax: 44 1382 562 426  
eleanor.gilroy@scri.ac.uk

**Girard, Lourdes**

UNAM, Centro de Ciencias Genomicas  
Genomica Funcional de Procariotes  
Av Univ S/N Col Champilpa  
Cuernavaca, Mor., 62210  
MEXICO  
Tel: 52 777 329 1696  
Fax: 52 777 317 5094  
girard@ccg.unam.mx

**Gonzalez, Esther M.**

UNAM, Publica De Navarra  
Ciencias Del Medio Natural Dept  
Campus De Arrosadia  
Pamplona, 31006  
SPAIN  
Tel: 34 948 168 412  
Fax: 34 948 168 390  
esther.gonzalez@unavarra.es

**Gonzalez, Juan E.**

Univ of Texas  
Molecular and Cellular Biology  
FO 31 - Box 830688  
Richardson, TX 75083-0688  
Tel: (972) 883-2526  
Fax: (972) 883-2409  
jgonzal@utdallas.edu

**Gottfert, Michael**

T U Dresden  
Inst Fur Genetik  
Mommensenstrasse 13  
Dresden, 01062  
GERMANY  
Tel: 49 351 463 4000  
Fax: 49 351 463 7725  
mgoettfe@rcs.urz.tu-dresden.de

**Govers, Francine**

Wageningen Univ  
Laboratory of Phytopathology  
Binnenhaven 5  
Wageningen, 6709 PD  
NETHERLANDS  
Tel: 31 317 483 138  
Fax: 31 317 483 412  
francine.govers@wur.nl

**Grant, Sarah R.**

Univ of North Carolina  
Biology Dept  
CB#3280 - 301 Coker Hall  
Chapel Hill, NC 27599  
Tel: (919) 962-7253  
Fax: (919) 962-1625  
sgrant@email.unc.edu

**Gresshoff, Peter M.**

Univ of Queensland  
 Ctr for Integrative Legume Research  
 Brisbane St Lucia, QLD 4072  
 AUSTRALIA  
 Tel: 61 7 3365 3550  
 Fax: 61 7 3365 3556  
 p.gresshoff@uq.edu.au

**Gross, Dennis C.**

Texas A&M Univ  
 Plant Pathology and Microbiology Dept  
 2132 TAMU  
 College Station, TX 77843-2132  
 Tel: (979) 845-8288  
 Fax: (979) 845-6483  
 d-gross@tamu.edu

**Guerinot, Mary Lou**

Dartmouth College  
 Biology Dept  
 6044 Gilman  
 Hanover, NH 03755  
 Tel: (603) 646-2527  
 Fax: (603) 646-1347  
 guerinot@dartmouth.edu

**Guinel, Frederique C.**

Wilfrid Laurier Univ  
 Biology Dept  
 Waterloo, ON N2L 3C5  
 CANADA  
 Tel: (519) 884-0710x2230  
 Fax: (519) 746-0677  
 fguinel@wlu.ca

**Gutjahr, Caroline**

Univ de Lausanne  
 Molecular Plant Biology Dept  
 Biophore  
 Lausanne, 1015  
 SWITZERLAND  
 Tel: 44 21 692 4233  
 Fax: 44 21 692 4185

**H****Haas, Dieter**

Univ de Lausanne  
 Inst de Microbiologie Fondamentale  
 Batiment de Biologie  
 Lausanne, CH-1015  
 SWITZERLAND  
 Tel: 41 21 692 5631  
 Fax: 41 21 692 5635  
 dieter.haas@unil.ch

**Hadwiger, Lee A.**

Washington State Univ  
 Plant Pathology Dept  
 Pullman, WA 99164-6430  
 Tel: (509) 335-3751  
 Fax: (509) 335-9581  
 chitosan@wsu.edu

**Hahn, Matthias**

Univ of Kaiserslautern  
 PO Box 3049 - Biology Dept  
 Paul Ehrlich Str 22  
 Kaiserslautern, 67653  
 GERMANY  
 Tel: 49 631 205 2402  
 Fax: 49 631 205 4716  
 hahn@hrk.uni-kl.de

**Halterman, Dennis A.**

Univ of Wisconsin  
 Plant Pathology Dept  
 1630 Linden Dr - Russell Labs  
 Madison, WI 53706-1598  
 Tel: (608) 265-2144  
 Fax: (608) 263-2626  
 dah@plantpath.wisc.edu

**Hammond-Kosack, Kim E.**

Rothamsted Research  
 Plant-Pathogen Interaction Division  
 Harpenden, Herts, AL5 2JQ  
 UNITED KINGDOM  
 Tel: 44 1582 763 133x2240  
 Fax: 44 1582 715 009  
 kim.hammond-kosack@bbsrc.ac.uk

**Hardy, Ralph W.**

1075 Brintons Bridge Road  
 West Chester, PA 19382-8111  
 Tel: (607) 254-1240  
 Fax: (716) 741-5108

**Harris, Jeanne M.**

Univ of Vermont  
 Plant Biology Dept  
 Marsh Life Sciences  
 Burlington, VT 05405-0086  
 Tel: (802) 656-2933  
 Fax: (802) 656-0440  
 jmharris@zoo.uvm.edu

**Harrison, Maria J.**

Boyce Thompson Inst  
 Plant Research  
 Tower Road  
 Ithaca, NY 14853  
 Tel: (607) 254-6472  
 Fax: (607) 254-6779  
 mjh78@cornell.edu

**Hartmann, Anton**

GSF Natl Res Ctr for Env and Health  
 Microbe-Plant Interactions  
 Ingolstaedter Landstr. 1  
 Neuherberg,  
 Bavaria, 85764  
 GERMANY  
 Tel: 49 89 3187 4109  
 Fax: 49 89 3187 3382  
 anton.hartmann@gsf.de

**Hata, Shingo**

Nagoya Univ  
 Grad School of Bioagricultural Sciences  
 Furo-cho, Chikusa-ku  
 Nagoya, 464-8601  
 JAPAN  
 Tel: 81 52 789 4019  
 Fax: 81 52 789 5558  
 shing@agr.nagoya-u.ac.jp

**He, Sheng Yang**

Michigan State Univ  
 Plant Research Laboratory  
 206 Plant Biology Building  
 East Lansing, MI 48824  
 Tel: (517) 353-9181  
 Fax: (517) 353-9168  
 hes@msu.edu

**Hemmati, Naghmeh**

Apt 5  
 1565 Logan Dr  
 Carbondale, IL 62901  
 Tel: (618) 457-7876  
 naghmeh@siu.edu

**Hernandez, Georgina**

CIFN UNAM  
 Molecular Ecology Dept  
 UNAM - AP Postal 565-A  
 Cuernavaca, Mor., 62210  
 MEXICO  
 Tel: 52 73 139877  
 Fax: 52 73 116710  
 gina@cifn.unam.mx

**Heu, Sunggi**

Natl Inst of Agric Sci & Tech RDA  
 Plant Pathology Dept  
 Seodundong 250  
 Suwon, 441-707  
 SOUTH KOREA  
 Tel: 81 31 290 0420  
 Fax: 81 31 290 0408  
 heu@rda.go.kr

**Hill, Steve**

BASF Corp  
 26 Davis Dr  
 Research Triangle Park, NC 27709  
 Tel: (919) 547-2805  
 Fax: (919) 547-2423  
 steve.hill@basf.com

**Hirata, Hisae**

Shizuoka Univ  
 Faculty of Agriculture  
 836 Ohy, Suruga-ku  
 Shizuoka, 422-8529  
 JAPAN  
 Tel: 81 54 238 4819  
 Fax: 81 54 238 4823  
 hisaeh@agr.shizuoka.ac.jp

**Hirsch, Ann M.**

Univ of California  
 Molecular Cell & Dev Biology  
 405 Hilgard Ave  
 Los Angeles, CA 90095-1606  
 Tel: (310) 206-8673  
 Fax: (310) 206-5413  
 ahirsch@ucla.edu

**Hofte, Monica M.**

Univ of Gent  
 Crop Protection Dept  
 Coupure Links 653  
 Gent, 9000  
 BELGIUM  
 Tel: 32 9 264 6017  
 Fax: 32 9 264 6238  
 monica.hofte@ugent.be

**Holsters, Marcelle**

RUG Lab Molecular Genetics  
 Technologie Park 927  
 Gent, Zwynnaarde, 9052  
 BELGIUM  
 Tel: 32 9 33 13900  
 Fax: 32 9 33 13809  
 mahol@psb.ugent.be

**Horvath, Diana M.**

Mediant  
 Suite 1907  
 1630 Chicago Ave  
 Evanston, IL 60201  
 Tel: (847) 425-1277  
 Fax: (847) 425-1232  
 dmh@mediant.us

**Hua, Jian**

Cornell Univ  
 Plant Biology Dept  
 158 Emerson Hall  
 Ithaca, NY 14853  
 Tel: (607) 255-5554  
 Fax: (607) 255-5407  
 jh299@cornell.edu

**Huang, Hsiou-Chen**

Natl Chung Hsing Univ  
 Graduate Inst of Biotechnology  
 250 Kuo-Kuang Road  
 Taichung, 40227  
 TAIWAN REP OF CHINA  
 Tel: 886 4 2285 2155  
 Fax: 886 4 2285 3527  
 hchuang@dragon.nchu.edu.tw

**Huang, Xiang**

Syngenta Biotechnology Inc  
 3054 Cornwallis Road  
 Res Triangle Park, NC 27709  
 Tel: (919) 541-8695  
 Fax: (919) 541-8585  
 xiang.huang@syngenta.com

**Huitema, Edgar**

Case Western Reserve Univ  
 Molecular Biology & Microbiology  
 10900 Euclid Ave  
 Cleveland, OH 44106  
 Tel: (216) 368-3438  
 exh57@case.edu

**Hulbert, Scot H.**

Washington State Univ  
 Plant Pathology Dept  
 PO Box 646430  
 Pullman, WA 99164-6430  
 Tel: (509) 335-3722  
 Fax: (509) 335-9581  
 scot\_hulbert@wsu.edu

**Hurek, Thomas**

Univ of Bremen  
 Gen Microbiology, FB2, NW2, Rm 3220  
 PO Box 330440 - Leobener Str  
 Bremen, D-28334  
 GERMANY  
 Tel: 49 421 218 2001  
 Fax: 49 421 218 9058  
 thurek@uni-bremen.de

**Hwang, Ingyu**

Seoul Natl Univ  
 School of Agricultural Biotechnology  
 San 56-1, Shillim-dong, Kwanak-gu  
 Seoul, 151-742  
 KOREA  
 Tel: 81 2 880 4676  
 Fax: 81 2 873 2317  
 ingyuu@snu.ac.kr

**Hynes, Michael F.**

Univ of Calgary  
 Biology Dept  
 2500 Univ Drive NW  
 Calgary, AB T2N 1N4  
 CANADA  
 Tel: (403) 220-8473  
 Fax: (403) 289-9311  
 hynes@ucalgary.ca

**Iacobellis, Nicola Sante**

Univ Basilicata  
Biologia - Biotech Agro Forest  
Via N Sauro 85  
Potenza, 85100  
ITALY  
Tel: 39 971 205 498  
Fax: 39 971 205 702  
iacobellis@unibas.it

**Ichinose, Yuki**

Okayama Univ  
Dept of Agric  
1-1-1, Tsushima-naka  
Okayama, 700-8530  
JAPAN  
Tel: 81 86 251 8308  
Fax: 81 86 251 8308  
yuki@cc.okayama-u.ac.jp

**Inada, Noriko**

Nara Inst of Science & Technology  
8916-5, Takayama, Ikoma  
Ikoma-shi, Nara, 630-01  
JAPAN  
Tel: 81 74 372 6250  
Fax: 81 74 372 6251  
norikoi@bs.naist.jp

**Inagaki, Yoshishige**

Okayama Univ  
Fac of Agric - Genetic Engineering Lab  
Tsushima-naka 1-1-1  
Okayama, 700-8530  
JAPAN  
Tel: 81 86 251 8307  
Fax: 81 86 251 8307  
yinagaki@cc.okayama-u.ac.jp

**Ishii, Hideo**

Natl Inst for Agro-Environmental  
Sciences  
Environmental Biofunction Div  
Kannondai 3-1-3  
Tsukuba, Ibaraki, 305-8604  
JAPAN  
Tel: 81 298 388 307  
Fax: 81 298 388 199  
hideo@niaes.affrc.go.jp

**Ishimaru, Carol A.**

Univ of Minnesota  
495 Borlaug Hall - Plant Path Dept  
1991 Upper Buford Circle  
St Paul, MN 55108-0010  
Tel: (612) 625-9736  
Fax: (612) 625-9728  
cishimar@tc.umn.edu

**J****Jackson, Robert W.**

Univ of Reading  
School of Biological Sciences  
Ams Bldg, Whiteknights  
Reading, RG6 6AJ  
UNITED KINGDOM  
Tel: 44 118 378 8892  
Fax: 44 118 378 6671  
r.w.jackson@reading.ac.uk

**Jakab, Gabor**

Univ of PECs  
Plant Physiology Dept  
1 Fjusag U.6  
Pecs, 7624  
HUNGARY  
Tel: 36 20 368 7432  
Fax: 36 20 7250 3634  
jakab@ttk.pte.hu

**James, Euan K.**

Univ of Dundee  
Ctr for High Resolution Imaging/  
Process  
MSL/WTB Complex-School of Life  
Sciences  
Dundee, DDI 5EH  
UNITED KINGDOM  
Tel: 44 1382 344 741  
Fax: 44 1382 345 893  
e.k.james@dundee.ac.uk

**Jenner, Carol**

Warwick HRI  
Wellesbourne  
Warwickshire, CV35 9EF  
UNITED KINGDOM  
Tel: 44 24 7657 4455  
Fax: 44 24 7657 4500  
carol.jenner@warwick.ac.uk

**Ji, Pingsheng**

Univ of Georgia  
Plant Pathology Dept  
115 Coastal Way - PO Box 748  
Tifton, GA 31793  
Tel: (229) 386-3160  
Fax: (229) 386-7285  
pji@uga.edu

**Jia, Yulin**

USDA ARS DB NRRRC  
2890 Hwy 130 E  
Stuttgart, AR 72160-0287  
Tel: (870) 672-9300x229  
Fax: (870) 673-7581  
yulin.jia@ars.usda.gov

**Jin, Hailing**

Univ of California  
Plant Pathology Dept  
900 University Ave  
Riverside, CA 92521-0001  
Tel: (951) 827-7995  
Fax: (951) 827-4294  
hailingj@ucr.edu

**Johnson, Richard D.**

AgResearch Grasslands  
Forage Biotechnology  
Tennent Dr  
Palmerston North,  
NEW ZEALAND  
Tel: 64 6 351 8090  
Fax: 64 6 351 8032

**Jones, Jonathan**

John Innes Centre  
Sainsbury Lab  
Norwich Research Park  
Colney Lane, Norwich, NR4 7UH  
UNITED KINGDOM  
Tel: 44 1603 450 327  
Fax: 44 1603 450 011  
jonathan.jones@sainsbury-laboratory.  
ac.uk

**Jones, Kathryn M.**

Apartment 2L  
176 Richdale Ave  
Cambridge, MA 02140  
Tel: (617) 253-4721  
Fax: (617) 253-2643  
kunjones@mit.edu

**Joosten, Matthieu**

Wageningen Agricultural Univ  
Dept of Phytopathology  
Binnenhaven 9  
Wageningen, 6709 PD  
NETHERLANDS  
Tel: 31 317 483 411  
Fax: 31 317 483 412  
matthieu.joosten@wur.nl

**Jordan, Tina**

Univ of Zurich  
Inst for Plant Biology  
Zollikerstr 107  
Zurich, 8008  
SWITZERLAND  
Tel: 41 44 634 8234  
Fax: 41 44 634 8204  
tjordan@botinst.unizh.ch

**K****Kachroo, Pradeep**

Univ of Kentucky  
Plant Pathology Dept  
1405 Veterans Dr  
Lexington, KY 40546-0091  
Tel: (859) 257-7445  
Fax: (859) 323-1961  
pk62@uky.edu

**Kaku, Hanae**

Meiji Univ  
Life Sciences Dept  
1-1-1, Higashi-Mita, Tama-ku  
Kawasaki, Kanagawa, 214-8571  
JAPAN  
Tel: 81 44 934 7805  
Fax: 81 44 934 7805  
kaku@isc.meiji.ac.jp

**Kalkman, Eric**

Wageningen Univ  
Laboratory of Phytopathology  
Binnenhaven 5  
Wageningen, 6709 PD  
NETHERLANDS  
Tel: 31 317 483 131  
Fax: 31 317 483 412  
eric.kalkman@wur.nl

**Kamakura, Takashi**

Tokyo Univ of Science  
Applied Biological Science Dept  
2641 Yamazaki  
Noda, Chiba, 278-8510  
JAPAN  
Tel: 81 4 7122 9149  
Fax: 81 4 7123 9767  
kamakura@rs.noda.tus.ac.jp

**Kamoun, Sophien**

John Innes Centre  
Sainsbury Laboratory  
Colney Lane  
Norwich, NR4 7UH  
UNITED KINGDOM  
Tel: 44 1603 450 410  
sophien.kamoun@tsl.ac.uk

**Kavroulakis, Nektarios**

NAGREF, Inst of Chania  
Agrokipo  
Chania, 731 00  
GREECE  
Tel: 30 2 821 083 428  
nkavroulakis@nagref-cha.gr

**Keel, Christoph J.**

Univ de Lausanne  
Microbiologie Fondamentale Dept  
Batiment De Biologie  
Lausanne-Dorigny, CH-1015  
SWITZERLAND  
Tel: 41 21 692 5636  
Fax: 41 21 692 5605  
christoph.keel@unil.ch

**Keller, Beat**

Univ of Zurich  
Inst for Plant Biology  
Zollikerstrasse 107  
Zurich, 8008  
SWITZERLAND  
Tel: 41 44 634 8230  
Fax: 41 44 634 8204  
bkeller@botinst.unizh.ch

**Kemp, Benjamin P.**

Univ of Warwick  
Warwick HRI  
Wellesbourne  
Warwick, CV35 9EF  
UNITED KINGDOM  
Tel: 44 2476 575 164  
Fax: 44 2476 574 500  
b.p.kemp@warwick.ac.uk

**Kendra, David F.**

USDA ARS NCAUR  
1815 N Univ Street  
Peoria, IL 61604-3902  
Tel: (309) 681-6579  
Fax: (309) 681-6689  
david.kendra@ars.usda.gov

**Kereszt, Attila**

Inst for Plant Genomics, Human  
Biotechnology & Bioenergy  
Bay Zoltan Foundation for Applied Res  
Derkovits Faszor 2  
Szeged, 6726  
HUNGARY  
Tel: 36 62 546 976  
Fax: 36 62 546 974  
kereszt@bzaka.hu

**Kertes, Michael A.**

Univ of Manchester  
School of Biological Sciences  
1-800 Stopford Bldg - Oxford Road  
Manchester, M13 9PT  
UNITED KINGDOM  
Tel: 44 161 275 3895  
Fax: 44 161 275 5656  
michael.kertes@man.ac.uk



**Kiely, Patrick D.**  
Univ College Cork  
Microbiology Dept  
College Road  
Cork  
IRELAND  
Tel: 353 21 490 2934  
patkiel01@yahoo.com

**Kijne, Jan W.**  
Leiden Univ  
Gorlaeus Lab  
Einsteinweg 55  
Leiden, 2333 AL  
NETHERLANDS  
Tel: 31 71 527 5057  
Fax: 31 71 527 5088  
j.kijne@science.leidenuniv.nl

**Kim, Jihyun F.**  
Korea Res Inst of Bioscience & Biotech  
Microbial Genomics Laboratory  
PO Box 115  
Yuseong-gu, Daejeon, 305-600  
SOUTH KOREA  
Tel: 82 42 860 4412  
Fax: 82 42 879 8595  
jfk@kribb.re.kr

**Kim, Ki-Jeong**  
Korea Univ  
School of Life Sciences &  
Biotechnology  
#102 Anam-5ka, Sungbuk-ku  
Seoul, 136-701  
SOUTH KOREA  
Tel: 82 2 3290 3440  
Fax: 82 2 928 1274  
sheep7916@korea.ac.kr

**Kingsley, Mark T.**  
Savannah River Natl Laboratory  
Env Science & Biotechnology  
Special Programs/CB/999-W/Rm 314  
Aiken, SC 29808  
Tel: (803) 819-8442  
Fax: (803) 819-8432  
mark.kingsley@srnl.doe.gov

**Kiraly, Lorant**  
Plant Protection Inst  
Hungarian Academy of Sciences  
15 Herman Otto Str - Biotechnology  
Budapest, 1022  
HUNGARY  
Tel: 36 1 487 7527  
Fax: 36 1 487 7555  
lkir@nki.hu

**Klessig, Daniel F.**  
Boyce Thompson Inst  
Plant Research  
Tower Road  
Ithaca, NY 14853-1802  
Tel: (607) 254-1300  
Fax: (607) 254-6779  
dfk8@cornell.edu

**Knogge, Wolfgang H.**  
Inst of Plant Biochemistry  
Weinberg 3  
Halle, 06120  
GERMANY  
Tel: 49 345 5582 1450  
Fax: 49 345 5582 1409  
wknogge@ipb-halle.de

**Kobayashi, Issei**  
Mie Univ  
Plant Functional Genomics Division  
1515 Kamihama - Life Science Res Ctr  
Tsu, Mie, 514-8507  
JAPAN  
Tel: 81 592 31 9074  
Fax: 81 592 31 9048  
issei@gene.mie-u.ac.jp

**Kodama, Motoichiro**  
Tottori Univ  
Faculty of Agric - Plant Path Lab  
Koyama-Minami 4-101  
Tottori, 680-8553  
JAPAN  
Tel: 81 857 31 5364  
Fax: 81 857 31 5364  
mk@muses.tottori-u.ac.jp

**Koebnik, Ralf**  
CNRS UPS IRD  
UMR 5096  
911, Ave Agropolis  
Montpellier, 34394  
FRANCE  
Tel: 33 46 741 6212  
Fax: 33 46 741 6181  
ralf.koebnik@mpl.ird.fr

**Kogel, Karl-Heinz**  
Justus Liebig Univ  
Inst Fur Phytopath/Zoologie  
Heinrich Buff Ring 26-32  
Giessen, 35392  
GERMANY  
Tel: 49 641 993 7490  
Fax: 49 641 993 7499  
karl-heinz.kogel@agr.uni-giessen.de

**Kondorosi, Adam**  
CNRS  
Inst Des Sciences Du Vegetal  
Ave de la Terrasse  
Gif Sur Yvette, 91198  
FRANCE  
Tel: 33 16 982 3698  
Fax: 33 16 982 3695  
adam.kondorosi@isv.cnrs-gif.fr

**Kondorosi, Eva**  
CNRS - Inst Sciences Vegetal  
Ave De La Terrasse  
Gif Sur Yvette, 91198  
FRANCE  
Tel: 33 1 6982 3791  
Fax: 33 1 6982 3695  
eva.kondorosi@isv.cnrs-gif.fr

**Kouchi, Hiroshi**  
Natl Inst of Agrobiological Sciences  
Plant Pathology Dept  
2-1-2 Kannondai  
Tsukuba Ibaraki, 305-8602  
JAPAN  
Tel: 81 29 838 8377  
Fax: 81 29 838 8347  
kouchih@nias.affrc.go.jp

**Krause, Andrea**  
Univ of Bremen FB2  
Allgemeine Mikrobiologie  
Postfach 33 04 40  
Bremen, 28334  
GERMANY  
Tel: 49 421 218 4327  
Fax: 49 421 218 9058  
akrause@uni-bremen.de

**Kuester, Helge**  
Univ Bielefeld  
Inst for Genome Research  
Universitaetsstrasse 25  
Bielefeld, 33594  
GERMANY  
Tel: 49 5211 064 819  
Fax: 49 5211 065 626  
helge.kuester@genetik.uni-bielefeld.de

**Kunkel, Barbara N.**  
Washington Univ  
Biology Dept  
1 Brookings Dr - Campus Box 1137  
St Louis, MO 63130-4862  
Tel: (314) 935-7284  
Fax: (314) 935-4432  
kunkel@biology.wustl.edu

**Kunze, Gernot**  
ETH Zurich  
Inst for Plant Sciences  
Eschikon 33 - Fed Inst of Technology  
Eschikon, 8315  
SWITZERLAND  
Tel: 41 52 354 9190  
Fax: 41 52 354 9219  
kunzeg@ethz.ch

**Lacroix, Benoit**  
State Univ of New York  
Biochemistry & Cell Biology Dept  
Stony Brook, NY 11794-5215  
Tel: (631) 632-1015  
blacroix@notes.cc.sunysb.edu

**Lamb, Christopher J.**  
John Innes Centre  
Norwich Research Park  
Colney Lane  
Norwich, NR4 7UH  
UNITED KINGDOM  
Tel: 44 1603 450 265  
Fax: 44 1630 450 016  
chris.lamb@bbsrc.ac.uk

**Lartey, Robert T.**  
USDA ARS  
1500 N Central Ave  
Sidney, MT 59270  
Tel: (406) 433-9490  
Fax: (406) 433-5038  
rlartey@sidney.ars.usda.gov

**Leach, Jan E.**  
Colorado State Univ  
Bioagric Sci and Pest Mgmt Dept  
Plant Sciences Building  
Fort Collins, CO 80523-1177  
Tel: (970) 491-2924  
Fax: (970) 491-3862  
jan.leach@colostate.edu

**Lee, Hyun Hwa**  
Chosun Univ  
College of Nature Science  
Biology Dept - Seosuk-Dong  
Guang-Ju, 501-759  
SOUTH KOREA  
Tel: 82 62 230 6653  
Fax: 82 62 230 6664  
papaya@chosun.ac.kr

**Lee, Steven A.**  
Pennsylvania State Univ  
Plant Pathology Dept  
307 Buckhout Laboratory  
University Park, PA 16802-4507  
sal272@psu.edu

**Levy, Maggie**  
Hebrew Univ of Jerusalem  
Plant Pathology & Microbiology Dept  
PO Box 12  
Rehovot, 76100  
ISRAEL  
Tel: 972 8 948 9162  
Fax: 972 8 946 6794  
levym@agri.huji.ac.il

**Li, Xin**  
Univ of British Columbia  
Michael Smith Labs  
Rm 301, 2185 East Mall  
Vancouver, BC V6T 1Z4  
CANADA  
Tel: (604) 802-3155  
Fax: (604) 822-2114  
xinli@interchange.ubc.ca

**Liberti, Daniele**  
Agric & Agri-Food Canada  
Southern Crop Prot and Food Res Ctr  
1391 Sandford Street  
London, ON N5V 4T3  
CANADA  
Tel: (519) 457-1470x283  
Fax: (519) 457-3997  
libertid@agr.gc.ca

**Lima, Giuseppe**  
Univ of Molise  
Animal, Plant & Envl Sciences Dept  
Via F. de Sanctis SNC  
Campobasso, 86100  
ITALY  
Tel: 39 874 404 659  
Fax: 39 874 404 855  
lima@unimol.it

**Lin, Fu-Cheng**  
Zhejiang Univ  
Biotechnology Inst  
Kaxuan Road 268, Hangzhou  
Zhejiang, 310 029  
PEOPLES REP OF CHINA  
Tel: 86 571 8697 1185  
Fax: 86 571 8697 1516  
fuchenglin@zju.edu.cn

**Lin, Nai-Chun**  
Natl Taiwan Univ  
Agricultural Chemistry Dept  
No 1, Sec 4, Roosevelt Road  
Taipei, 10617  
TAIWAN REP OF CHINA  
Tel: 886 2 3366 3840  
Fax: 886 2 3366 3840  
nlin@ntu.edu.tw

**Lindeberg, Magdalen**  
Cornell Univ  
Plant Pathology Dept  
334 Plant Science Bldg  
Ithaca, NY 14850  
Tel: (607) 254-7297  
Fax: (607) 255-4471  
ml16@cornell.edu

**Lindow, Steven E.**  
Univ of California  
Plant and Microbial Biology Dept  
111 Koshland Hall  
Berkeley, CA 94720-3102  
Tel: (510) 642-4174  
Fax: (510) 642-4995  
icelab@socrates.berkeley.edu

**Lindstrom, Kristina**  
Univ of Helsinki  
Applied Chem and Microbiology  
PO Box 56 - Vilinkaari 9  
Helsinki, 00014  
FINLAND  
Tel: 358 970 855 282  
Fax: 358 970 85322  
lindstro@millipede.helsinki.fi

**Liou, Ruey-Fen**  
Nat'l Taiwan Univ  
Plant Pathology and Microbiology Dept  
1 Sec 4 Roosevelt Rd  
Taipei, 106  
TAIWAN REP OF CHINA  
Tel: 886 2 3366 5208  
Fax: 886 2 2362 0271  
rliou@ntu.edu.tw

**Lipka, Volker**  
John Innes Centre  
Sainsbury Laboratory  
Colney Lane  
Norwich, NR4 7UH  
UNITED KINGDOM  
Tel: 44 1603 450 408  
Fax: 44 1603 450 011  
volker.lipka@sainsbury-laboratory.ac.uk

**Liptay, Albert**  
Stoller Enterprises Inc  
Suite 100 - Research Dept  
4001 W Sam Houston Pkwy N  
Houston, TX 77043-1226  
Tel: (713) 461-1493x126  
Fax: (713) 461-4467  
aliptay@stollerusa.com

**Liu, Hui**  
Scottish Crop Research Inst  
Plant Pathogen Interactions  
Invergowrie  
Dundee, DD2 5DA  
UNITED KINGDOM  
Tel: 44 1382 562 731  
Fax: 44 1382 562 426  
hliu@scri.sari.ac.uk

**Lojkowska, Ewa**  
Univ of Gdansk  
Plant Protection & Biotechnology Dept  
24 Kladki Str  
Gdansk, 80-822  
POLAND  
Tel: 48 58 523 6345  
Fax: 48 58 301 2807  
lojkowsk@biotech.univ.gda.pl

**Long, Sharon R.**  
Stanford Univ  
Bio Sciences Dept  
216 Gilbert Bldg - 371 Serra Mall  
Stanford, CA 94305-5020  
Tel: (650) 723-3232  
Fax: (650) 725-8309  
srl@stanford.edu

**Loper, Joyce E.**  
USDA ARS  
Horticulture Crops Lab  
3420 NW Orchard Ave  
Corvallis, OR 97330-5014  
Tel: (541) 738-4057  
Fax: (541) 738-4025  
loperj@science.oregonstate.edu

**Lopez, Camilo E.**  
Univ Nacional de Colombia  
Biology Dept  
Cra 30 No 45-03 Ciudad Univ  
Bogota, 14490  
COLOMBIA  
Tel: 57 1 316 5000x11328  
Fax: 57 1 316 5310  
celopezc@unal.edu.co

**Lopez Llorca, Luis V.**  
Univ de Alicante  
Dept Ciencias del Mar Y Biología  
Aplicada  
Apdo Correos 99  
Alicante, 03080  
SPAIN  
Tel: 34 96 590 3400x3381  
Fax: 34 96 590 9840  
lv.lopez@ua.es

**Lorito, Matteo**  
Univ Degli Studi Di Napoli  
Dip Arbopave, Sez Patologia Veg  
Via Università, 100  
Portici (NA), 80055  
ITALY  
Tel: 39 81 775 5142  
Fax: 39 81 775 5320  
lorito@unina.it

**Lovell, Helen C.**  
Univ of the West of England  
Biosciences Dept  
Frenchay Campus, Cold Harbour Lane  
Bristol, BS16 1Q4  
UNITED KINGDOM  
Tel: 44 117 9328 2102  
helen2.lovell@uwe.ac.uk

## M

**Ma, Wenbo**  
Univ of California  
Plant Pathology & Microbiology Dept  
900 University Ave  
Riverside, CA 92521-0001  
Tel: (951) 827-4349  
Fax: (951) 827-4294  
wenboma@ucr.edu

**Maldonado-Bonilla, Luis D.**  
CINVESTAV - IPN  
Genetic Engineering  
Km 9.6 Lib Norte Carretera  
Irapuato-Leon  
Irapuato, Gto, 36500  
MEXICO  
Tel: 52 462 623 9659  
Fax: 52 462 624 5849  
lmaldona@ira.cinvestav.mx

**Mansfield, John W.**  
Imperial College At Wye  
Biology Dept  
Wye Campus  
Ashford, Kent, TN25 5AH  
UNITED KINGDOM  
Tel: 44 1233 2075 94264  
j.mansfield@imperial.ac.uk

**Manulis, Shulamit**  
ARO The Volcani Center  
Plant Pathology Dept  
Bet Dagan, 50250  
ISRAEL  
Tel: 972 3 968 3685  
Fax: 972 3 968 3686  
shulam@volcani.agri.gov.il

**Marek, Stephen M.**  
Oklahoma State Univ  
Entomology and Plant Pathology Dept  
127 Noble Research Center  
Stillwater, OK 74078-3033  
Tel: (405) 744-3090  
Fax: (405) 744-6039  
mareks@okstate.edu

**Martin, Gregory B.**  
Boyce Thompson Inst  
Tower Road  
Ithaca, NY 14850  
Tel: (607) 254-1208  
Fax: (607) 255-6695  
gbm7@cornell.edu

**Martyn, Raymond D.**  
Purdue Univ  
Center for Crop Biosecurity  
915 W State Street  
West Lafayette, IN 47907-2054  
Tel: (765) 494-4645  
Fax: (765) 494-0363  
rmartyn@purdue.edu

**Mastronunzio, Juliana E.**  
Univ of Connecticut  
Molecular & Cell Biology Dept  
91 North Eagleville Rd - Unit 3125  
Storrs, CT 06269  
Tel: (860) 486-1885  
Fax: (860) 912-3602  
juliana.mastronunzio@uconn.edu

**Matsuda, Yoshinori**  
Kinki Univ  
Faculty of Agric - Plant Pathology Lab  
3327-204 Nakamachi  
Nara, 631-8505  
JAPAN  
Tel: 81 742 43 1511  
Fax: 81 742 43 1155  
ymatsuda@nara.kindai.ac.jp

**Matsushita, Yasuhiko**  
Tokyo Univ of Agric & Technology  
Gene Research Center  
3-5-8 Saiwai-cho - Fuchu-Shi  
Tokyo, 183-8509  
JAPAN  
Tel: 81 42 367 5855  
Fax: 81 42 367 5855  
ymatsu@cc.tuat.ac.jp

**Mauch, Felix C.**  
Univ of Fribourg  
Biology Dept  
rue du Musee 10  
Fribourg, 1700  
SWITZERLAND  
Tel: 41 26 300 8817  
Fax: 41 26 300 9740  
felix.mauch@unifr.ch

**Mauch-Mani, Brigitte**  
Univ De Neuchatel  
Dept of Sci Lap of Mole and Cell Bio  
Rue Emile Argand 11, BP 158  
Neuchatel, CH-2009  
SWITZERLAND  
Tel: 41 32 718 2205  
Fax: 41 32 718 2201  
brigitte.mauch@unine.ch

**Mayama, Shigeyuki**  
Kobe Univ  
Faculty of Agric - Plant Pathology Dept  
1-1 Rokkodai-Cho, Nada-ku  
Kobe, 657-8501  
JAPAN  
Tel: 81 78 803 5864  
Fax: 81 78 803 5865  
mayama@port.kobe-u.ac.jp

**McCafferty, Heather R. K.**  
Hawaii Agric Research Center  
Suite 300  
99-193 Aiea Heights Dr  
Aiea, HI 96701-3911  
Tel: (808) 486-5303  
Fax: (808) 486-5020  
hmccafferty@harc-hspa.com

**Melcher, Ulrich K.**  
Oklahoma State Univ  
Biochem and Molec Biology Dept  
246 Noble Research Center  
Stillwater, OK 74078-3035  
Tel: (405) 744-6210  
Fax: (405) 744-7799  
umelcher@biochem.okstate.edu

**Melotto, Maeli**  
Univ of Texas  
Biology Dept  
B29 Life Science Bldg  
Arlington, TX 76019  
Tel: (817) 272-1122  
Fax: (817) 272-2855  
melotto@uta.edu

**Meyer, Damien F.**  
Iowa State Univ  
Plant Pathology Dept  
351 Bessey Hall  
Ames, IA 50011-1020  
Tel: (515) 294-3502  
Fax: (515) 294-9420  
dfmeyer@iastate.edu

**Meyers, Blake C.**  
Univ of Delaware  
Plant and Soil Sciences Dept  
15 Innovation Way - Room 230  
Newark, DE 19711  
Tel: (302) 831-3418  
Fax: (302) 831-4841  
meyers@dbi.udel.edu

**Michelmores, Richard W.**  
Univ of California  
Vegetable Crops Dept  
148 Asmundson Hall  
Davis, CA 95616-8746  
Tel: (530) 752-1729  
Fax: (530) 752-9659  
rwmichelmores@ucdavis.edu

**Mitchell, Thomas K.**  
Ohio State Univ  
Plant Pathology Dept  
481 B Kottman Hall - 2021 Coffey Rd  
Columbus, OH 43210  
Tel: (614) 292-1728  
Fax: (614) 292-4455  
mitchell.815@osu.edu

**Mitchum, Melissa G.**  
Univ of Missouri  
Division of Plant Sciences  
371 H Bond Life Sciences Ctr  
Columbia, MO 65211  
Tel: (573) 882-6152  
Fax: (573) 884-9676  
goellnerm@missouri.edu

**Mlotshwa, Sizolwenkosi**  
Univ of South Carolina  
Biological Sciences Dept  
700 Sumter Street - CLS 601  
Columbia, SC 29208  
Tel: (803) 777-7030  
Fax: (803) 777-4002  
sizo@biol.sc.edu

**Moeder, Wolfgang A.**  
Univ of Toronto  
Botany Dept  
25 Willcocks Street  
Toronto, ON M5S 3B2  
CANADA  
Tel: (416) 946-0444  
Fax: (416) 978-5878  
moeder@csb.utoronto.ca

**Moffett, Peter**  
Boyce Thompson Inst  
Tower Road  
Ithaca, NY 14850  
Tel: (607) 254-1362  
Fax: (607) 254-1242  
pm99@cornell.edu

**Morris, Paul F.**  
Bowling Green State Univ  
Biological Science Dept  
217 Life Science Bldg  
Bowling Green, OH 43403-0212  
Tel: (419) 372-0481  
Fax: (419) 372-2024  
pmorris@bgnet.bgsu.edu

**Mosquera, Gloria M.**  
Colorado State Univ  
Bioagric Sci and Pest Mgmt Dept  
C206 Plant Sciences  
Fort Collins, CO 80523  
Tel: (970) 491-6997  
Fax: (970) 449-3745  
gloria.mosquera@colostate.edu

**Mou, Zhonglin**  
Univ of Florida  
Microbiology and Cell Science Dept  
Museum Rd - Bldg 981 - Rm 1249  
Gainesville, FL 32611  
Tel: (352) 392-0116  
Fax: (352) 392-5922  
zhlmou@ufl.edu

**Mudgett, Mary Beth**  
Stanford Univ  
Biological Sciences Dept  
371 Serra Mall  
Stanford, CA 94305-5020  
Tel: (650) 725-8650  
Fax: (650) 723-6132  
mudgett@stanford.edu

**Mysore, Kirankumar S.**  
Samuel Roberts Noble Foundation  
Plant Biology Dept  
2510 Sam Noble Pkwy  
Ardmore, OK 73401  
Tel: (580) 224-6740  
Fax: (580) 224-6692  
ksmysore@noble.org

## N

**Nagy, Ervin D.**  
Univ of Georgia  
Crop & Soil Sciences Dept  
111 Riverbend Road  
Athens, GA 30605  
Tel: (706) 542-5223  
Fax: (706) 583-8120  
dnagy@yahoo.co.uk

**Nayudu, Murali M.**  
Australian Natl Univ  
Botany and Zoology Division  
Faculty of Science  
Canberra, ACT 2000  
AUSTRALIA  
Tel: 61 2 6125 3643  
Fax: 612 6125 5573  
murali.nayudu@anu.edu.au

**Nelson, Louise M.**  
Univ of British Columbia Okanagan  
Biology and Physical Geography  
3333 University Way  
Kelowna, BC V1V 1V7  
CANADA  
Tel: (250) 807-8151  
Fax: (250) 979-6438  
louise.nelson@ubc.ca

**Nelson, Richard S.**  
Samuel Roberts Noble Foundation  
2510 Sam Noble Pkwy  
PO Box 2180  
Ardmore, OK 73402-2180  
Tel: (580) 224-6600  
Fax: (580) 224-6692  
rsnelson@noble.org

**Nester, Eugene W.**  
Univ of Washington  
Microbiology Dept  
Box 357242  
Seattle, WA 98195-7242  
Tel: (206) 616-8588  
Fax: (206) 543-8297  
gnester@u.washington.edu

**Nirmala, Jayaveeramuthu**  
Washington State Univ  
Crop & Soil Sciences Dept  
Johnson Hall  
Pullman, WA 99164  
Tel: (509) 432-1866  
Fax: (509) 335-8674  
nirmala@wsu.edu

**Noel, K. Dale**  
Marquette Univ  
Biology Dept  
PO Box 1881  
Milwaukee, WI 53201-1881  
Tel: (414) 288-1475  
Fax: (414) 288-7357  
dale.noel@marquette.edu

**Norelli, John L.**  
USDA ARS  
Appalachian Fruit Research Station  
2217 Wiltshire Road  
Kearneysville, WV 25430  
Tel: (304) 725-3451x264  
Fax: (304) 728-2340  
jnorelli@afrc.ars.usda.gov

**Norris, Joanna H.**  
Univ of Rhode Island  
Biological Sciences Dept  
Ranger Hall  
Kingston, RI 02881  
Tel: (401) 874-2623  
Fax: (401) 874-5974  
jnorris@uri.edu

**Novak, Karel**  
Inst of Microbiology Academy  
Science Center  
Videnska 1083  
Prague 4, 142 20  
CZECH REPUBLIC  
Tel: 42 2 4106 2339  
Fax: 42 2 4106 2384  
novak@biomed.cas.cz

**Nuernberger, Thorsten P.**  
Eberhard-Karls Univ Tubingen  
Molecular Biology of Plants (ZMBP)  
Auf Der Morgenstelle 5  
Tubingen, 72076  
GERMANY  
Tel: 49 7071 297 6658  
Fax: 49 7071 295 226  
thorsten.nuernberger@zmbp.uni-tuebingen.de

**Nuss, Donald L.**  
Univ of Maryland  
Biotechnology Inst Ctr for Biosystems  
Res  
9600 Gudelsky Dr  
Rockville, MD 20850  
Tel: (301) 405-0334  
Fax: (301) 314-9075  
nuss@umbi.umd.edu

## O

**O'Connell, Richard J.**  
Max Planck Inst for Plant Breeding Res  
Plant Microbe Interactions Dept  
Carl Von Linne Weg 10  
Koeln, 50829  
GERMANY  
Tel: 49 221 5062 311  
Fax: 49 221 5062 353  
oconnel@mpiz-koeln.mpg.de

**Ohashi, Yuko**  
Natl Inst of Agrobiological Sciences  
Molecular Genetics Dept  
Kannon dai 2-1-2  
Tsukuba, Ibaraki, 305-8602  
JAPAN  
Tel: 81 29 838 7440  
Fax: 81 29 838 7469  
yohashi@affrc.go.jp

**Ohnishi, Kouhei**  
Kochi Univ  
Research Inst of Molecular Genetics  
200 Monobe  
Nankoku, Kochi, 783-8502  
JAPAN  
Tel: 81 88 864 5213  
Fax: 81 88 864 5109

**Okajima, Shoichi**  
Hokkaido Univ  
Grad School of Agriculture  
N21 W10-Kita-Ku  
Sapporo, 001-0021  
JAPAN  
Tel: 81 11 706 9242  
Fax: 81 11 706 9242  
sokajima@chem.agr.hokudai.ac.jp

**Oke, C. Valerie**  
Univ of Pittsburgh  
Biological Sciences Dept  
A527 Langley Hall - 4249 5th Ave  
Pittsburgh, PA 15260  
Tel: (412) 624-4635  
Fax: (412) 624-4759  
voke@pitt.edu

**Okon, Yaacov**  
Hebrew Univ of Jerusalem  
Plant Pathology and Microbiology Dept  
PO Box 12 - Fac of Agric - FEQS  
Rehovot, 76100  
ISRAEL  
Tel: 972 8 948 9216  
Fax: 972 8 946 6794  
okon@agri.huji.ac.il

**Okubara, Patricia A.**  
Washington State Univ  
USDA ARS  
367A Johnson Hall  
Pullman, WA 99164-6430  
Tel: (509) 335-7824  
Fax: (509) 335-7674  
pokubara@wsu.edu

**Okude, Shouko**  
Shizuoka Univ  
Faculty of Agriculture  
836 Ohya, Shizuoka-shi  
Shizuoka-ken, 422 8529  
JAPAN  
Tel: 81 54 238 4823  
Fax: 81 54 238 4823  
okude\_shouko@hotmail.co.jp

**Oldach, Klaus H.**  
SARDI  
Plant Genomics Centre  
Hartley Grove  
Urrbrae, Adelaide, 5064  
AUSTRALIA  
Tel: 61 8 8303 9734  
Fax: 61 8 8303 9669  
oldach.klaus@saugov.sa.gov.au

**Oldroyd, Giles E. D.**  
John Innes Center  
Disease & Stress Biology Dept  
Norwich Research Park  
Norwich, NR4 7UH  
UNITED KINGDOM  
Tel: 44 1603 450 206  
Fax: 44 1603 450 045  
giles.oldroyd@bbsrc.ac.uk

**Oliver, Richard P.**  
Murdoch Univ  
Australian Centre for  
Necrotrophic Fungal Pathogens  
Perth, WA 6150  
AUSTRALIA  
Tel: 61 8 9360 7404  
Fax: 61 8 9360 6303  
roliver@murdoch.edu.au



**Ott, Thomas**

INRA UMR CNRS LIPM  
Chemin De Borde-Rouge - Auzeville  
BP 52627  
Castanet Tolosan Cedex, 31326  
FRANCE  
Tel: 33 56 128 5327  
Fax: 33 56 128 5061  
tott@toulouse.inra.fr

**Ottado, Jorgelina**

Natl Univ of Rosario  
Molecular Biology Dept  
Suipacha 531  
Rosario, 2000  
ARGENTINA  
Tel: 54 341 435 1235  
Fax: 54 341 439 0465  
jottado@fbioyf.unr.edu.ar

**Ouchi, Seiji**

6-7-21 Suzaku  
Nara, 631-0806  
JAPAN  
Tel: 81 742 71 7430  
senaouchi@nifty.com

**Ownley, Bonnie H.**

Univ of Tennessee  
Entomology and Plant Pathology Dept  
2431 Joe Johnson Dr - 205 Ellington  
Knoxville, TN 37996-4500  
Tel: (865) 974-0219  
Fax: (865) 974-4744  
bownley@utk.edu

**P****Palukaitis, Peter F.**

Scottish Crop Research Inst  
Virology Unit  
Errol Road  
Invergowrie, Dundee, DD2 5DA  
UNITED KINGDOM  
Tel: 44 1382 568 523  
Fax: 44 1382 562 426  
peter.palukaitis@scri.ac.uk

**Palva, Tapio E.**

Univ of Helsinki  
Genetics Div - Biosciences Dept  
PO Box 56  
Helsinki, 00014  
FINLAND  
Tel: 358 9 1915 9600  
Fax: 358 9 1915 9076  
tpalva@mappi.helsinki.fi

**Parniske, Martin**

Univ of Munich  
Biology I, Genetics Dept  
Maria-Ward-Str. 1a  
Munchen, D-80638  
GERMANY  
Tel: 44 89 2180 6150  
martin.parniske@lrz.uni-muenchen.de

**Paszkowski, Uta**

Univ of Lausanne  
Molecular Plant Biology Dept  
Biology Bldg  
Lausanne, 1015  
SWITZERLAND  
Tel: 41 21 692 4210  
Fax: 41 21 692 4195  
uta.paszkowski@unil.ch

**Perotto, Silvia**

Univ of Torino  
Dept Di Biologia Vegetale  
Viale Mattioli 25  
Torino, 10125  
ITALY  
Tel: 39 11 670 5987  
Fax: 39 11 670 5962  
silvia.perotto@unito.it

**Pieterse, Corne M. J.**

Utrecht Univ  
Kruyt Bldg, 3rd Floor, West Wing  
Padualaan 8  
Utrecht, CH 3584  
NETHERLANDS  
Tel: 31 30 253 6887  
Fax: 31 30 251 8366  
c.m.j.pieterse@uu.nl

**Pirhonen, Minna**

Univ of Helsinki  
Dept of Applied Biology  
PO Box 27 - Plant Pathology Lab  
Helsinki, 00014  
FINLAND  
Tel: 358 9 1915 9621  
Fax: 358 9 1915 8727  
minna.pirhonen@helsinki.fi

**Polverari, Annalisa**

Univ Degli Studi Di Verona  
Scientifico E Tecnologico Dept  
Ca Vignal, Strada Le Grazie 15  
Verona, 37134  
ITALY  
Tel: 39 45 802 7064  
Fax: 39 45 802 7929  
annalisa.polverari@univr.it

**Poole, Philip S.**

Univ of Reading  
PO Box 228 - Div of Microbiology  
School of AMS - Whiteknights  
Reading, RG6 2AJ  
UNITED KINGDOM  
Tel: 44 118 931 8895  
Fax: 44 118 931 6671  
p.s.poole@reading.ac.uk

**Powell, Ann L.**

Univ of California  
Plant Reproductive Biology Bldg  
1 Shields Ave  
Davis, CA 95616  
Tel: (530) 752-1413  
Fax: (530) 752-2278  
alpowell@ucdavis.edu

**Preston, Gail M.**

Univ of Oxford  
Plant Sciences Dept  
South Parks Road  
Oxford, OX1 3RB  
UNITED KINGDOM  
Tel: 44 1865 275 106  
Fax: 44 1865 275 074  
gail.preston@plant-sciences.ox.ac.uk

**Prinsen, Els L.**

Univ of Antwerp  
Biology Dept - CGB  
Groenenborgerlaan 171  
Antwerp, 2020  
BELGIUM  
Tel: 32 3 265 3711  
Fax: 32 3 265 3417  
els.prinsen@ua.ac.be

**Pritchard, Leighton**

Scottish Crop Research Inst  
Plant Pathology Dept  
Errol Road - Invergowrie  
Dundee, DD2 5DA  
UNITED KINGDOM  
Tel: 44 1382 562 731  
Fax: 44 1382 562 426  
lpritch@sri.ac.uk

**Puhler, Alfred**

Univ Bielefeld  
PO Box 100131 - Genetics Dept  
Fakultaet fuer Biologie  
Bielefeld, 33501  
GERMANY  
Tel: 49 521 106 5607  
Fax: 49 521 106 5626  
puehler@genetik.uni-bielefeld.de

**Puthoff, David P.**

Frostburg State Univ  
Biology Dept - 212 Compton Sci Ctr  
101 Braddock Road  
Frostburg, MD 21532  
Tel: (301) 687-4172  
dpputhoff@frostburg.edu

**R****Radwan, Osman E.**

Univ of Illinois  
Crop Sciences Dept  
NSRC 1101 W Peabody Dr - Rm 236  
Urbana, IL 61801  
Tel: (217) 244-3264  
Fax: (217) 244-1230  
oradwan@uiuc.edu

**Rafiqi, Maryam**

Australian Natl Univ  
Plant Cell Biology Dept  
Sullivans Creek Rd ANU  
Canberra, ACT 2601  
AUSTRALIA  
Tel: 61 2 6125 4026  
Fax: 61 2 494 891  
maryam.rafiqi@anu.edu.au

**Rasmussen, Jack B.**

North Dakota State Univ  
Plant Pathology Dept  
Walster Hall - PO Box 5012  
Fargo, ND 58105  
Tel: (701) 231-1027  
Fax: (701) 231-7851  
jack.rasmussen@ndsu.edu

**Ratet, Pascal**

CNRS - Inst Sciences Vegetal  
Batiment 23  
1 Ave de la Terrasse  
Gif Sur Yvette, 91198  
FRANCE  
Tel: 33 1 6982 3574  
Fax: 33 1 6982 3695  
pascal.ratet@isv.cnrs-gif.fr

**Rathjen, John P.**

The Sainsbury Laboratory  
John Innes Centre  
Colney Lane  
Norwich, NR4 7UH  
UNITED KINGDOM  
Tel: 44 1603 450 405  
john.rathjen@tsl.ac.uk

**Ravnikar, Maja**

Natl Inst of Biology  
Vecna pot 111  
POB 141  
Ljubljana, 1001  
SLOVENIA  
Tel: 386 14 233 388  
Fax: 386 14 235 038  
maja.ravnikar@nib.si

**Redinbaugh, Margaret G.**

Ohio State Univ  
USDA ARS - Plant Pathology Dept  
1680 Madison Ave  
Wooster, OH 44691  
Tel: (330) 263-3965  
Fax: (330) 263-3841  
redinbaugh.2@osu.edu

**Ribeiro, Ana I. F.**

Inst Invest Cientifica Tropical  
ECO-Bio  
Quinta Do Marques (E.A.N.)  
Oeiras, 2784-505  
PORTUGAL  
Tel: 351 21 454 4687  
Fax: 351 21 454 4689  
aribeiro32@hotmail.com

**Rickauer, Martina A.**

ENSAT - SP2  
18 Chemin De Borderouge  
BP 32607 Auzeville - Biotech Vegetale  
Castanet - Tolosan, 31326  
FRANCE  
Tel: 33 562 193 587  
Fax: 33 562 193 589  
martina.rickauer@ensat.fr

**Rico, Arantza**

Univ of Oxford  
Plant Sciences Dept  
South Parks Road  
Oxford, OX1 3RB  
UNITED KINGDOM  
Tel: 44 1 865 275 111  
Fax: 44 1 865 275 074  
arantza.rico@plants-ox.ac.uk

**Rispail, Nicolas**

Univ De Cordoba  
Genetics Dept  
Campus de Rabanales Edif C5  
Cordoba, 14071  
SPAIN  
Tel: 34 95 721 8981  
ge2ririn@uco.es

**Robert-Seilaniantz, Alexandre**

The Sainsbury Laboratory  
John Innes Centre  
Colney Lane  
Norwich, NR4 7UH  
UNITED KINGDOM  
Tel: 44 1603 450 433  
alexandre.robert-seilaniantz@tsl.ac.uk

**Roberts, Daniel P.**

USDA ARS  
Sustainable Agric Systems Lab  
10300 Baltimore Ave  
Beltsville, MD 20705  
Tel: (301) 504-5680  
Fax: (301) 504-6491  
dan.roberts@ars.usda.gov

**Rocha-Sosa, Mario**

UNAM - Inst de Biotecnologia  
Plant Molecular Biology Dept  
Av Univ 2001, Col Champilla  
Cuernavaca, Mor., 62210  
MEXICO  
Tel: 52 777 329 1652  
Fax: 52 777 317 2388  
rocha@ibt.unam.mx

**Rodriguez-Palenzuela, Pablo**

ETSIA UPM  
Biotechnology Dept  
Av. Comptintense S/N  
Madrid, 28040  
SPAIN  
Tel: 34 91 336 5702  
Fax: 34 91 336 5753  
pablo.rpalenzuela@upm.es

**Rolfe, Barry G.**

Australian Natl Univ  
PMI Group RSBS  
GPO Box 475  
Canberra, ACT 2601  
AUSTRALIA  
Tel: 61 6 6494054  
Fax: 61 6 2490754

**Romanazzi, Gianfranco**

Marome Polytechnic Univ  
Environmental & Crop Sciences Dept  
Via Breccia Blanche  
Ancona, 60131  
ITALY  
Tel: 39 71 220 4336  
Fax: 39 71 220 4856  
g.romanazzi@univpm.it

**Ronson, Clive W.**

Univ of Otago  
Microbiology Dept  
PO Box 56  
Dunedin, 9000  
NEW ZEALAND  
Tel: 64 3 479 7701  
Fax: 64 3 479 8540  
clive.ronson@stonebow.otago.ac.nz

**Rose, Jocelyn K.**

Cornell Univ  
Plant Biology Dept  
331 Emerson Hall  
Ithaca, NY 14853-4203  
Tel: (607) 255-4781  
Fax: (607) 255-5407  
jr286@cornell.edu

**Rose, Ray J.**

Univ of Newcastle  
ARC Ctr for Integrative Legume Res  
School of Env and Life Sciences  
Newcastle, NSW 2308  
AUSTRALIA  
Tel: 61 2 4921 5711  
Fax: 61 2 4921 6943  
ray.rose@newcastle.edu.au

**Roux, Milena E.**

The Sainsbury Laboratory  
John Innes Centre  
Colney Lane  
Norwich, NR4 7UH  
UNITED KINGDOM  
milena.roux@bbsrc.ac.uk

**Ruiz Roldan, Carmen**

Univ De Cordoba  
Genetics Dept  
Campus de Rabanales - Edif C5  
Cordoba, 14071  
SPAIN  
Tel: 34 957 218 981  
Fax: 34 957 212 072  
ge2rurom@uco.es

**Ruiz-Albert, Javier**

Univ of Malaga  
Cellular Biology, Genetics & Physiology  
Campus de Teatinos - Fac de Ciencias  
Malaga, 29071  
SPAIN  
Tel: 34 952 131 959  
Fax: 34 952 132 001  
javieruizal@uma.es

**S****Saad, Maged**

INRA  
LIPM Dept - BP 52627  
Chemin de Borde Rouge  
Castanet Tolosan, 31326  
FRANCE  
Tel: 33 56 128 5454  
Fax: 33 56 128 5061  
maged.saad@toulouse.inra.fr

**Saarilahti, Hannu T.**

Univ of Helsinki  
Biocenter 2 - Genetics Division  
PO Box 56  
Helsinki, 00014  
FINLAND  
Tel: 358 9 708 59107  
Fax: 358 9 708 59079  
hannu.saarilahti@helsinki.fi

**Saeki, Kazuhiko**

Nara Women's Univ  
1-18-14-1101 Edobori, Nishi-ku  
Osaka, 550-0002  
JAPAN  
Tel: 81 6 742 20 3028  
Fax: 81 6 742 20 3028  
ksaeki@cc.nara-wu.ac.jp

**Salmond, George P. C.**

Univ of Cambridge  
Biochemistry Dept - Tennis Court Road  
Building O - Downing Site  
Cambridge, CB2 1QW  
UNITED KINGDOM  
Tel: 44 1223 333 650  
Fax: 44 1223 766 108  
gpcs@mole.bio.cam.ac.uk

**Sanchez, Federico**

Univ of Mexico, Inst de Biotecnologia  
Plant Molecular Biology Dept  
A.V. Univ 2001, Champilla  
Cuernavaca, Morelos, 62210  
MEXICO  
Tel: 52 777 329 1653  
Fax: 52 777 3313 6600  
federico@ibt.unam.mx

**Sano, Teruo**

Hirosaki Univ  
Bunkyo-Chou 3  
Faculty of Agric and Life Sciences  
Hirosaki, 036-8561  
JAPAN  
Tel: 81 172 39 3817  
Fax: 81 172 39 3817  
sano@cc.hirosaki-u.ac.jp

**Sautter, Christof**

Inst of Plant Science  
ETH-Zurich  
Universitätsstrasse 2  
Zurich, 8092  
SWITZERLAND  
Tel: 41 1 632 5713  
Fax: 41 1 632 1044  
christof.sautter@ipw.biol.ethz.ch

**Savka, Michael A.**

Rochester Inst of Technology  
Biological Sciences Dept  
85 Lomb Memorial Dr - A350 Gosnell  
Rochester, NY 14623  
Tel: (585) 475-5141  
Fax: (585) 475-5760  
massbi@rit.edu

**Scala, Felice**

Univ Degli Studi Di Napoli  
Federico II - Dept AR BO PA VE  
Via Universita 100  
Portici (NA), IT-80055  
ITALY  
Tel: 39 81 253 9394  
Fax: 39 81 253 9372  
scala@unina.it

**Schechter, Lisa M.**

Univ of Missouri  
Biology Dept  
223 Research Bldg - 1 Univ Blvd  
St Louis, MO 63121  
Tel: (314) 516-4146  
Fax: (314) 516-6233  
schechterl@umsl.edu

**Scheel, Dierk**

Inst of Plant Biochemistry  
Stress and Development Biology Dept  
Weinberg 3  
Halle (Salle), 06120  
GERMANY  
Tel: 49 345 5582 1400  
Fax: 49 345 5582 1409  
dscheel@ipb-halle.de

**Schirawski, Jan**

Max Planck Inst  
Terr Mikrobiology  
Karl Von Frisch, Organismic Interaction  
Marburg, 35043  
GERMANY  
Tel: 49 6421 178 601  
Fax: 49 6421 178 609  
schiraws@mpi-marburg.mpg.de

**Schlink, Katja**

Technische Univ Munich  
Forest Genetics Dept  
Am Hochanger 13  
Freising, 85354  
GERMANY  
Tel: 49 8161 714 679  
Fax: 49 8161 714 861  
schlink@wzw.tum.de

**Schmidt, Klaus**

Planta Gmbh  
Grimsehlstrasse 31  
Einbeck, DE-37574  
GERMANY  
Tel: 49 55 6131 1324  
Fax: 49 55 6131 1243  
k.schmidt@kws.de

**Schoonbeek, Henk-Jan**

Univ of Fribourg  
Plant Biology Dept  
10, Chemin du Musee  
Fribourg, 1700  
SWITZERLAND  
Tel: 41 26 300 8845  
Fax: 41 26 300 9740  
henk-jan.schoonbeek@unifr.ch

**Schulze-Lefert, Paul**

Max Planck Inst Zuchtungsforchung  
Plant Microbe Interactions Dept  
Carl Von Linne Weg 10  
Cologne, DE-50829  
GERMANY  
Tel: 49 221 5062 350  
Fax: 49 221 5062 353  
schlef@mpiz-koeln.mpg.de

**Schweizer, Patrick**

Inst of Plant Genetics and Crop  
Plant Res  
Genome Center  
Correnstrasse 3  
Gatersleben, DE-06466  
GERMANY  
Tel: 49 39 482 5660  
Fax: 49 39 482 5595  
schweiz@ipk-gatersleben.de

**Scofield, Steven R.**

Purdue Univ  
USDA ARS  
915 West State Street  
West Lafayette, IN 47907  
Tel: (765) 494-3674  
Fax: (765) 494-2926  
scofield@purdue.edu

**Scott, Barry**

Massey Univ  
Inst of Molecular BioSciences  
Private Bag 11-222  
Palmerston North,  
NEW ZEALAND  
Tel: 64 6 350 4033  
Fax: 64 6 350 5688  
d.b.scott@massey.ac.nz

**Scott, Paul T.**

Univ of Queensland  
ARC Ctr for Integrative Legume  
Research  
John Hines Building  
St Lucia, QLD 4072  
AUSTRALIA  
p.scott@uq.edu.au

**Segonzac, Cecile**

John Innes Centre  
Norwich Research Park  
Sainsbury Lab - Colney Lane  
Norwich, NR4 7UH  
UNITED KINGDOM  
Tel: 44 1603 450 400  
Fax: 44 1630 450 011  
cecile.segonzac@bbsrc.ac.uk

**Seo, Jeong-Ah**

Seoul Natl Univ  
Ctr for Agricultural Biomaterials  
San 56-1, Shillimdong, Gwanakgu  
Seoul, 151-921  
KOREA  
Tel: 82 2 880 4889  
Fax: 82 2 873 5260  
sja815@hotmail.com

**Serra Yoldi, Maria Teresa**

CSIC  
Plant Biology Dept  
Ramiro de Maeztu No 9  
Madrid, 28040  
SPAIN  
Tel: 34 1 837 3112  
Fax: 34 1 536 0432  
mserra@cib.csic.es

**Shah, Jyoti**

Univ of North Texas  
Biological Sciences Dept  
124 Sci & Res Bldg - PO Box 305220  
Denton, TX 76203-5220  
Tel: (940) 565-3535  
Fax: (940) 565-4136  
shah@unt.edu

**Sheen, Jen**

Massachusetts General Hospital  
Molecular Biology Dept  
50 Blossom Street - Wellman 9  
Boston, MA 01913  
Tel: (617) 726-5978  
Fax: (617) 726-6893  
sheen@molbio.mgh.harvard.edu

**Shibuya, Naoto**

Meiji Univ  
Life Sciences Dept  
1-1-1 Higashi-Mita, Tama-ku  
Kawasaki, Kanagawa, 214-8571  
JAPAN  
Tel: 81 44 934 7039  
Fax: 81 44 934 7039  
shibuya@isc.meiji.ac.jp

**Shimamoto, Ko**

Nara Inst of Science & Technology  
8916-5, Takayama  
Ikoma, Nara, 630-0101  
JAPAN  
Tel: 81 743 72 5501  
Fax: 81 743 72 5502  
simamoto@bs.aist-nara.ac.jp

**Shimizu, Bun-ichi**

Kyoto Univ  
Inst for Chemical Research  
Gokasho  
Uji, 611 011  
JAPAN  
Tel: 81 774 38 3232  
Fax: 81 774 38 3229  
bun@biofun.kuicr.kyoto-u.ac.jp

**Shinano, Takuro**

Natl Agric Res Ctr for Hokkaido Region  
Rhizosphere Env Research Team  
1, Hitsujigaoka, Toyohiraku  
Sapporo, 062-8555  
JAPAN  
Tel: 81 11 857 9243  
Fax: 81 11 859 2178  
shinano@affrc.go.jp

**Shittu, Hakeem O.**

Univ of Guelph  
Molecular & Cellular Biology Dept  
15 College Ave W  
Guelph, ON N1G 1R7  
CANADA  
Tel: (519) 824-4120x58311  
Fax: (519) 763-8621  
hshittu@uoguelph.ca

**Simoes de Araujo, Jean Luiz**

EMBRAPA  
Genetic & Bioquímica Dept  
Rodovia Br 465 Km 7  
Seropidica, RJ CEP, 23890-000  
BRAZIL  
Tel: 55 21 2682 1500  
Fax: 55 21 2682 1230  
jean@cnpab.embrapa.br

**Sinapidou, Evaggelia A.**

K. Karamanli 10  
Kalamaria  
Thessaloniki, 55132  
GREECE  
Tel: 30 6977 470 970  
Fax: 30 2310 488 996  
sineva01@hotmail.com

**Singh, Karam B.**

CSIRO Plant Industry  
Private Bag #5  
Wembley, WA, 6913  
AUSTRALIA  
Tel: 61 8 9333 6320  
Fax: 61 8 9387 8991  
karam.singh@csiro.au

**Slusarenko, Alan J.**

RWTH Aachen Univ  
Plant Physiology Dept - BioIII  
Worringerweg 1  
Aachen, 52056  
GERMANY  
Tel: 49 241 802 6650  
Fax: 49 241 802 2395  
alan.slusarenko@bio3.rwth-aachen.de

**Smart, Christine D.**

Cornell Univ  
Plant Pathology Dept  
NYSAES - 630 North St  
Geneva, NY 14456  
Tel: (315) 787-2441  
Fax: (315) 787-2389  
cds14@cornell.edu

**Smith, R. Stewart**

EMD Crop BioScience Inc  
3101 W Custer Ave  
Milwaukee, WI 53209-4827  
Tel: (414) 462-7600  
Fax: (414) 462-7186  
rss@nitragin.com

**Sneh, Baruch**

Tel Aviv Univ  
Plant Sciences Dept  
Ramat Aviv  
Tel Aviv, 69978  
ISRAEL  
Tel: 972 3 640 9842  
Fax: 972 3 640 9380  
baruchs@tauex.tau.ac.il

**Sohn, Keehoon**

The Sainsbury Laboratory  
John Innes Centre  
Colney Lane  
Norwich, NR4 7UH  
UNITED KINGDOM  
Tel: 44 1603 450 437  
Fax: 44 1603 450 011  
kee.sohn@tsl.ac.uk

**Somerville, Shauna C.**

Carnegie Institute  
Plant Biology Dept  
260 Panama St  
Stanford, CA 94305-4101  
Tel: (650) 325-1521x257  
Fax: (650) 325-6857  
ssomerville@stanford.edu

**Song, Wen-Yuan**

Univ of Florida  
Plant Pathology Dept  
1453 Fifield Hall  
Gainesville, FL 32611  
Tel: (352) 392-7231  
Fax: (352) 392-6532  
wsong@ifas.ufl.edu

**Sonti, Ramesh V.**

Centre Cellular & Molecular Biol  
Uppal Road  
Hyderabad AP, 500 007  
INDIA  
Tel: 91 40 2719 2577  
Fax: 91 40 2716 0591  
sonti@ccmb.res.in

**Soto, Maria Jose**

CSIC  
Microbiology Dept  
Profesor Albareda 1  
Granada, 18008  
SPAIN  
Tel: 34 958 181 600x150  
Fax: 34 958 129 600  
mariajose.soto@eez.csic.es

**Stacey, Gary**

Univ of Missouri  
Plant Microbiology and Pathology Dept  
108 Waters Hall  
Columbia, MO 65211-6130  
Tel: (573) 884-4752  
Fax: (573) 882-0588  
staceyg@missouri.edu

**Stahl, Dietmar J.**

Planta GmbH  
Grimsehlstrasse 31  
Pf 1463  
Einbeck, D-37555  
GERMANY  
Tel: 49 556 131 1735  
Fax: 49 556 131 1243  
d.stahl@kws.de

**Staneloni, Roberto**

Fundacion Inst Leloir  
Fundacion Campomar  
Av Patricias Argentinas 435  
Buenos Aires, 1405  
ARGENTINA  
Tel: 54 11 4863 4011  
Fax: 54 11 4865 2246  
rstaneloni@leloir.org.ar

**Stes, Elisabeth Maria**

Univ of Gent  
Plant System Biology Dept  
RUG/VIB2 - Technologicpark 927  
Gent, 9052  
BELGIUM  
Tel: 32 9 331 3913  
Fax: 32 9 331 3809  
elste@psb.ugent.be

**Stougaard, Jens**

Univ of Aarhus  
Molecular and Structural Biology  
Gustav Wieds Vej 10  
Aarhus, 8000 C  
DENMARK  
Tel: 45 8 942 5011  
Fax: 45 8 620 1222  
stougaard@mb.au.dk

**Strange, Richard N.**

Univ of London  
School of Biological & Chemical  
Sciences  
Birkbeck College - Malet Street  
London, WC1J 7HX  
UNITED KINGDOM  
Tel: 44 207 7631 6232  
r.strange@sbc.bbk.ac.uk

**Suarez-Rodriguez, Ramon**

CEIB-UAEM  
Biocologia Ambiental  
Av Univ No 1001 Col Chamilpa  
Cuernavaca, Mor, 62210  
MEXICO  
Tel: 52 777 329 7057  
Fax: 52 777 329 7030  
rsuarez@buzon.uaem.mx

**Subramanian, Senthil**

Donald Danforth Plant Science Ctr  
Yu Lab  
975 North Warson Road  
St Louis, MO 63132  
Tel: (314) 587-1449  
Fax: (314) 587-1541  
ssubramanian@danforthcenter.org

**Suganuma, Norio**

Aichi Univ of Education  
Dept of Life Science  
Kariya, Aichi, 448-8542  
JAPAN  
Tel: 81 566 26 2647  
Fax: 81 566 26 2310  
nsuganum@aeu.ac.jp

**Sugio, Akiko**

John Innes Centre  
Disease & Stress Biology Dept  
Colney Lane  
Norwich, NR4 7UH  
UNITED KINGDOM  
Tel: 44 1603 450 214  
Fax: 44 1603 450 045  
akiko.sugio@bbsrc.ac.uk

**Suzuki, Jon Y.**

USDA ARS PWA  
Pacific Basin Agric Res Ctr  
PO Box 4459  
Hilo, HI 96720  
Tel: (808) 959-4311  
Fax: (808) 959-5470  
jon.suzuki@ars.usda.gov

**Swords, Kathy M. M.**

J. R. Simplot Co  
Plant Sciences Dept  
5369 W Irving Street  
Boise, ID 83706  
Tel: (208) 327-3311  
kathy.swords@simplot.com



**Szurek, Boris**

Inst De Res Pour Le Development  
(IRD)  
911 Ave Agropolis  
BP 64501  
Montpellier, 34394  
FRANCE  
Tel: 33 4 6741 6212  
Fax: 33 4 6741 6181  
boris.szurek@mpl.ird.fr

**T****Takken, Frank**

Univ of Amsterdam  
Plant Pathology Dept  
Kruislaan 318  
Amsterdam, 1098 SM  
NETHERLANDS  
Tel: 31 20 525 7797  
Fax: 31 20 525 7934  
takken@science.uva.nl

**Teplitski, Max**

Univ of Florida  
Soil and Water Science Dept  
2159 McCarty Hall - A  
Gainesville, FL 32608  
Tel: (352) 392-1951  
maxtep@ufl.edu

**Teraoka, Tohru**

Tokyo Univ of Agric & Technology  
Applied Biological Science Dept  
3-5-8 Saiwai-cho  
Fuchu, Tokyo, 183-8509  
JAPAN  
Tel: 81 42 367 5692  
Fax: 81 42 367 5692  
teraoka@cc.tuat.ac.jp

**Terauchi, Ryohei**

Iwate Biotechnology Research Center  
22-174-4, Narita Kitakami  
Iwate, 024-0003  
JAPAN  
Tel: 81 197 68 2911  
Fax: 81 197 68 3881  
terauchi@ibrc.or.jp

**Thines, Eckhard**

Univ Kaiserslautern  
Paul Ehrlich Strasse 23  
Kaiserslautern, 67663  
GERMANY  
Tel: 49 631 205 4294  
Fax: 49 631 205 2999

**Thomashow, Linda S.**

Washington State Univ  
Plant Pathology Dept  
USDA ARS  
Pullman, WA 99164-6430  
Tel: (509) 335-0930  
Fax: (509) 335-7674  
thomasho@mail.wsu.edu

**Thomma, Bart P. H. J.**

Wageningen Univ  
Laboratory of Phytopathology  
Binnenhaven 5  
Wageningen, 6709 PD  
NETHERLANDS  
Tel: 31 317 484 536  
Fax: 31 317 483 412  
bart.thomma@wur.nl

**Tiffany, Michael G.**

Agdia Inc  
30380 County Road 6  
Elkhart, IN 46514-9514  
Tel: (574) 264-2615  
Fax: (574) 206-9360  
miket@agdia.com

**Tjamos, Eleftherios C.**

Agric Univ of Athens  
Lab Plant Pathology  
75 Iera Odos Str - Votanikos  
Athens, 118 55  
GREECE  
Tel: 30 210 529 4505  
Fax: 30 210 529 4513  
ect@aua.gr

**Tor, Mahmut**

Univ of Warwick  
Warwick HRI  
Wellesbourne, CV35 9EF  
UNITED KINGDOM  
Tel: 44 2476 575 029  
Fax: 44 2476 574 500  
mahmut.tor@warwick.ac.uk

**Tornero, Pablo**

IBMCP UPV CSIC  
Camino de Vera S/N  
Valencia, 46022  
SPAIN  
Tel: 34 96 387 7864  
Fax: 34 96 387 7859

**Torrance, Lesley**

Scottish Crop Research Inst  
Plant-Pathogen Interactions Programme  
Invergowrie  
Dundee, DD2 5DA  
UNITED KINGDOM  
Tel: 44 1382 568 578  
Fax: 44 1382 562 426  
ltorra@scri.sari.ac.uk

**Torto-Alalibo, Trudy A.**

VPI & State Univ  
Washington Street  
Blacksburg, VA 24060  
Tel: (540) 231-3572  
Fax: (540) 231-4163  
trudy@vbi.vt.edu

**Toruno, Tania**

Univ of Nebraska  
Apt 1  
4321 Holdrege Street  
Lincoln, NE 68503  
Tel: (402) 304-4604  
Fax: (402) 304-4604  
ttoruno2@unl.edu

**Tosa, Yukio**

Kobe Univ  
Faculty of Agriculture  
Rokko-dai 1-1  
Kobe, Hyogo, 657-8501  
JAPAN  
Tel: 81 78 803 6540  
Fax: 81 78 803 6540  
tosayuki@kobe-u.ac.jp

**Triplett, Eric W.**

Univ of Florida  
Microbiology & Cell Science Dept  
1052 Museum Road  
Gainesville, FL 32611  
Tel: (352) 392-1906  
Fax: (352) 392-5922  
ewt@ufl.edu

**Tsagris, Efthimia Mina**

Univ of Crete  
Biology Dept  
PO Box 2208 - Voutes  
Heraklion Crete, 71409  
GREECE  
Tel: 30 2810 394 367  
Fax: 30 2810 394 404  
tsagris@imbb.forth.gr

**Tsitsigiannis, Dimitrios I.**

Agric Univ of Athens  
Dept of Phytopathology  
Iera Odos 75  
Athens, 118 55  
GREECE  
Tel: 30 210 529 4506  
Fax: 30 210 529 4513  
dimtsi@aua.gr

**Tsuge, Takashi**

Nagoya Univ  
Grad School of Bioagricultural Sciences  
Furo-cho, Chikusa - Bioengineering Sci  
Nagoya, 464-8601  
JAPAN  
Tel: 81 52 789 4030  
Fax: 81 52 789 4030  
ttsuge@agr.nagoya-u.ac.jp

**Tsuyumu, Shinji**

Shizuoka Univ  
Faculty of Agriculture  
836 Surnga-ku Ohya  
Shizuoka, 422-8529  
JAPAN  
Tel: 81 54 238 4823  
Fax: 81 54 237 3028  
tsuyumu@agr.shizuoka.ac.jp

**Tudzynski, Paul W.**

Westfälische Wilhelms Univ  
Inst für Botanik  
Schlossgarten 3  
Muenster, 48149  
GERMANY  
Tel: 49 251 832 4998  
Fax: 49 251 832 1601  
tudzyns@uni-muenster.de

**Turgeon, B. Gillian**

Cornell Univ  
Plant Path & Plant Microbe Biology  
334 Plant Science Bldg  
Ithaca, NY 14853-5904  
Tel: (607) 254-7458  
Fax: (607) 255-8835  
bgt1@cornell.edu

**Tzfira, Tzvi**

Univ of Michigan  
Mol, Cell and Developmental Biology  
830 N Univ Ave - 40710 Nat Science  
Bldg  
Ann Arbor, MI 48109-1048  
Tel: (734) 764-3265  
Fax: (734) 647-1048  
ttzfira@umich.edu

**U****Uchiumi, Toshiki**

Kagoshima Univ  
Chemistry and Bioscience Dept  
1-21-35, Korimoto  
Kagoshima, 890-0065  
JAPAN  
Tel: 81 99 285 8164  
Fax: 81 99 285 8163  
uttan@sci.kagoshima-u.ac.jp

**Udvardi, Michael**

Samuel Roberts Noble Foundation  
Plant Biology Dept  
2510 Sam Noble Pkwy  
Ardmore, OK 73401  
Tel: (580) 224-6655  
Fax: (580) 224-6692  
mudvardi@noble.org

**Ugalde, Rodolfo Augusto**

Univ of San Martin  
Inst De Investigaciones Biotecnologicas  
Av Colectora General Paz 5445  
San Martin, BA 1650  
ARGENTINA  
Tel: 54 11 4580 7255  
Fax: 54 11 4752 9639  
rugalde@iib.unsam.edu.ar

**Uppalapati, Srinivasa Rao**

Samuel Roberts Noble Foundation  
Plant Biology Division  
2510 Sam Noble Pkwy  
Ardmore, OK 73401  
Tel: (405) 744-8268  
Fax: (405) 744-7373  
sruppalapati@noble.com

**V****Vailleau, Fabienne**

INP-ENSAT  
Lab SP2, Pathologie Des Plantes  
18, Chemin De Borde Rouge - BP  
32607  
Castanet, Tolosan, FR-31326  
FRANCE  
Tel: 33 562 193 567  
Fax: 33 562 193 589  
fabienne.vailleau@ensat.fr

**Vale, Giampiero**

C.R.A. Inst Sperimentale Cerealicoltura  
Sezione de Fiorenzuola D'Arda  
Via S. Protaso 302  
Fiorenzuola D'Arda, PC, 29017  
ITALY  
Tel: 39 523 983 758/9  
Fax: 39 523 983 750  
gp.vale@iol.it

**Valent, Barbara**

Kansas State Univ  
Plant Science Ctr - Plant Path Dept  
4024 Throckmorton Hall  
Manhattan, KS 66506-5502  
Tel: (785) 532-2336  
Fax: (785) 532-5692  
bvalent@ksu.edu

**Valkonen, Jari**

Univ of Helsinki  
Plant Path Lab - Applied Biology Dept  
PO Box 27 - Latokartanonkaari 7  
Helsinki, 00014  
FINLAND  
Tel: 358 9 191 58387  
Fax: 358 9 191 58727  
jari.valkonen@helsinki.fi

**Valls, Marc**

Univ of Barcelona  
Genetica Dept - Fac de Biologia  
Av Diagonal 645 Annex 2n Pis  
Barcelona, 08028  
SPAIN  
Tel: 34 93 403 5528  
Fax: 34 93 403 5304  
marcvalls@ub.edu

**Van Alfen, Neal K.**

Univ of California  
CAES Deans Office  
1 Shields Ave 150 Mark Hall  
Davis, CA 95616-8571  
Tel: (530) 752-1605  
Fax: (530) 752-9049  
nkvanalfen@ucdavis.edu

**Van Brussel, Anton A.**

Leiden Univ  
Inst Molecular Plant Sciences  
Clusius Lab - 64 Wassenaarseweg  
Leiden, 2333 AL  
NETHERLANDS  
Tel: 31 71 527 5068  
Fax: 31 71 527 5088  
a.a.n.van.brussel@biology.leidenuniv.nl

**van Damme, Els J. M.**

Univ of Gent  
Molecular Biotechnology Dept  
Coupure Links 653  
Gent, 9000  
BELGIUM  
Tel: 32 9 264 6086  
Fax: 32 9 264 6219  
elsjm.vandamme@ugent.be

**van de Mortel, Martijn**

Iowa State Univ  
Plant Pathology Dept  
351 Bessey Hall  
Ames, IA 50011-1020  
Tel: (515) 294-3661  
Fax: (515) 294-9420  
vdmortel@iastate.edu

**Van Den Ackerveken, Guido**

Utrecht Univ  
Molecular Cell Biology Dept  
Padualaan 8  
Utrecht, 3584 CH  
NETHERLANDS  
Tel: 31 30 253 3013  
Fax: 31 30 253 2837  
g.vandenackerveken@bio.uu.nl

**Van Gijsegem, Frederique**

Laboratoire De Pathologie Vegetale  
INRA INA-PG  
16 Rue Claude Bernard  
Paris, 75231  
FRANCE  
Tel: 33 1 4408 7259  
Fax: 33 1 4408 1631  
vangijse@inapg.fr

**Van Kan, Jan**

Wageningen Univ  
Phytopathology Dept  
PO Box 8025  
Wageningen, 6700 EE  
NETHERLANDS  
Tel: 31 317483126  
Fax: 31 317483412  
jan.vankan@wur.nl

**Van Loon, Leendert C.**

Utrecht Univ  
Plant-Microbe Interactions  
Padualaan 8  
Utrecht, 3584 CH  
NETHERLANDS  
Tel: 31 30 253 6840  
Fax: 31 30 253 2837  
l.c.vanloon@uu.nl

**Van West, Pieter**

Univ of Aberdeen  
Inst of Medical Science  
Mol/Cell Biology - Foresterhill  
Aberdeen, AB25-2ZD  
UNITED KINGDOM  
Tel: 44 1224 555848  
Fax: 44 1224 555844  
p.vanwest@abdn.ac.uk

**Vasanthaiyah, Hemanth K. N.**

Florida A&M Univ  
Plant Biotechnology Dept  
6505 Mahan Dr - Ctr for Viticulture  
Tallahassee, FL 32317  
Tel: (850) 412-5191  
Fax: (850) 561-2617  
hemanth.vasanthaiyah@gmail.com

**Verchot-Lubicz, Jeanmarie**

Oklahoma State Univ  
Entomology & Plant Pathology Dept  
127 Noble Research Center  
Stillwater, OK 74078-0001  
Tel: (405) 744-7895  
Fax: (405) 744-6039  
verchot.lubicz@okstate.edu

**Verdier-Michel, Valerie V.**

UMR UP IRD CNRS 5096  
911, Av Agropolis  
BP 64501  
Montpellier CEDEX 5, 34394  
FRANCE  
Tel: 33 467 416 212  
Fax: 33 467 416 181  
valerie.verdier@mpl.ird.fr

**Vereecke, Danny M.**

Univ of Gent - VIB2  
Plant System Biology Dept  
Technologiepark 927  
Gent, 9052  
BELGIUM  
Tel: 32 9 33 13 911  
Fax: 32 9 33 13 809  
danny.vereecke@psb.ugent.be

**Veronese, Paola**

North Carolina State Univ  
Center for Integrated Fungal Research  
Campus Box 7251  
Raleigh, NC 27695-7251  
Tel: (919) 513-8219  
Fax: (919) 513-0024  
paola\_veronese@ncsu.edu

**Voegele, Ralf T.**

Univ of Konstanz  
Biology LS Phytopathology Dept  
Universitaetsstr. 10  
Konstanz, 78457  
GERMANY  
Tel: 49 7531 884 305  
Fax: 49 7531 883 035  
ralf.voegele@uni-konstanz.de

**Voigt, Christian A.**

Carnegie Institute  
Plant Biology Dept  
260 Panama Street  
Stanford, CA 94305-4101  
Tel: (650) 325-1521x406  
Fax: (650) 325-6857  
cvoigt@stanford.edu

**Vojnov, Adrian Alberto**

Centro de Ciencia Y Tecnologia  
Dr Cesar Milstein  
Fundacion Pablo Cassara  
Saladillo, BA 2468  
ARGENTINA  
Tel: 54 11 4687 2542  
Fax: 54 11 4687 2542  
avojnov@fundacioncassara.org.ar

**W****Walton, Jonathan D.**

Michigan State Univ  
DOE - Plant Research Lab  
East Lansing, MI 48824  
Tel: (517) 353-4885  
Fax: (517) 353-9168  
walton@msu.edu

**Wang, Nian**

Univ of Florida  
700 Experiment Station Rd  
CREC  
Lake Alfred, FL 33850-2299  
Tel: (863) 956-1151  
Fax: (863) 956-4631  
nianwang@ufl.edu

**Wanner, Leslie A.**

USDA ARS  
Rm 226, Bldg 010A, BARC-West  
10300 Baltimore Ave  
Beltsville, MD 20705  
Tel: (301) 504-5953  
Fax: (301) 504-5062  
leslie.wanner@ars.usda.gov

**Wegener, Christina**

Federal Centre for Breeding Research  
Inst of Abiotic Swiss Tolerance  
Rudolf Schick Platz 3  
Gross Lusewitz, 18190  
GERMANY  
Tel: 49 382 094 5211  
Fax: 49 382 094 5120  
c.wegener@bafz.de

**White, Frank F.**

Kansas State Univ  
Plant Pathology Dept  
4024 Throckmorton Plant Science Ctr  
Manhattan, KS 66506  
Tel: (785) 532-1362  
Fax: (785) 532-5692  
fwhite@ksu.edu

**Whitham, Steven A.**

Iowa State Univ  
Plant Pathology Dept  
351 Bessey Hall  
Ames, IA 50011-1020  
Tel: (515) 294-4952  
Fax: (515) 294-9420  
swhitham@iastate.edu

**Wight, Wanessa D.**

Michigan State Univ  
Plant Research Lab - CMB  
166 Plant Biology Bldg  
East Lansing, MI 48824-1312  
Tel: (517) 353-4886  
Fax: (517) 353-9168  
wightwan@msu.edu

**Williamson, Valerie M.**

Univ of California  
Nematology Dept  
One Shields Ave  
Davis, CA 95616  
Tel: (530) 752-3502  
Fax: (530) 752-5674  
vmwilliamson@ucdavis.edu

**Wise, Roger P.**

Iowa State Univ  
USDA ARS - Plant Pathology Dept  
411 Bessey Hall  
Ames, IA 50011-1020  
Tel: (515) 294-9756  
Fax: (515) 294-9420  
rpwise@iastate.edu

**Wobbe, Kristin K.**

Worcester Polytechnic Inst  
Chemistry and Biochemistry Dept  
100 Institute Road  
Worcester, MA 01609-2247  
Tel: (508) 831-5375  
Fax: (508) 831-5933  
kwobbe@wpi.edu

**Wong, Hann Ling**

Nara Inst of Science & Technology  
Plant Molecular Genetics Lab  
8916-5, Takayama, Ikoma  
Nara, 630-01  
JAPAN  
Tel: 81 743 72 5501  
Fax: 81 743 72 5502  
h-wong@bs.naist.jp

**Wong, Mui Yun**

Univ Putra Malaysia  
Plant Protection Dept  
Faculty of Agriculture  
Serdang, Selangor, 43400  
MALAYSIA  
Tel: 60 19 273 5210  
Fax: 60 3 8656 0698  
muyun@putra.upm.edu.my

**Wulff, Brande Bruce**

Univ Politecnico De Valencia  
Inst De Biologia Mol Y Cel De Plantas  
Lab 21 - Camino De Vera S/N  
Valencia, 46022  
SPAIN  
Tel: 34 96 387 7864  
Fax: 34 96 387 7859  
bwulff@ibmcp.upv.es

## Y

### **Yalpani, Nasser**

Pioneer Hi-Bred Intl  
7250 NW 62nd Ave  
PO Box 552  
Johnston, IA 50131-0552  
Tel: (515) 270-4391  
Fax: (515) 334-4755  
nasser.yalpani@pioneer.com

### **Yamakawa, Takeo**

Kyushu Univ  
SSPP Div - Plant Resources Dept  
6-10-1 Hakozaki, Higashi-Ku  
Fukuoka, 812-8581  
JAPAN  
Tel: 81 92 642 2847  
Fax: 81 92 642 2848  
yamakawa@agr.kyushu-u.ac.jp

### **Yamamoto, Mikihiro**

Okayama Univ  
Faculty of Agric  
1-1-1 Tsushima-naka  
Okayama, 700-8530  
JAPAN  
Tel: 81 86 251 8301  
Fax: 81 86 251 8301  
myama@cc.okayama-u.ac.jp

### **Yao, Nan**

Sun Yat-Sen Univ  
School of Life Sciences  
Xingang Xi-lu No 135  
Guangzhou, Guangdong, 510 275  
PEOPLES REP OF CHINA  
Tel: 86 20 3933 2936  
Fax: 86 2 0 3933 2936  
nanyaol@gmail.com

### **Yasuda, Michiko**

Riken Inst  
Plant Acquired Immunity Res Unit  
2-1 Hirosawa Waka-Shi  
Wako, Saitama, 351-0198  
JAPAN  
Tel: 81 48 467 9529  
Fax: 81 48 462 4672  
ysdmichi@riken.jp

### **Yedidia, Iris**

ARO The Volcani Center  
Horticulture Dept  
PO Box 6  
Bet Dagan, 50250  
ISRAEL  
Tel: 972 3 968 3387  
Fax: 972 3 966 9583  
irisy@volcani.agri.gov.il

### **Yesmin, Laila**

Brett Young  
Research & Development  
PO Box 99, St Norbert Postal Station  
Winnipeg, MB R3V 1L5  
CANADA  
Tel: (204) 478-2629  
Fax: (204) 261-8872  
laila.yesmin@brettyoung.ca

### **Yoshiga, Toyoshi**

Saga Univ  
Applied Biological Sciences Dept  
Honjo 1  
Saga, 840-8502  
JAPAN  
Tel: 81 952 288 746  
Fax: 81 952 288 746  
tyoshiga@cc.saga-u.ac.jp

### **Yoshioka, Hirofumi**

Nagoya Univ  
Grad School of Bioagricultural Sciences  
Furo-cho, Chikusa  
Nagoya, Aichi, 464-8601  
JAPAN  
Tel: 81 52 789 4283  
Fax: 81 52 789 4283  
hyoshiok@agr.nagoya-u.ac.jp

### **Yoshioka, Keiko**

Univ of Toronto  
Cell & Systems Biology Dept  
25 Willcocks Street  
Toronto, ON M5S 2G3  
CANADA  
Tel: (416) 978-3545  
Fax: (416) 978-5878  
yoshioka@csb.utoronto.ca

### **Yousef, Lina F.**

Ohio State Univ  
School of Env & Natural Resources  
2021 Coffey Rd - 210 Kottman Hall  
Columbus, OH 43210  
Tel: (614) 247-6897  
yousef.13@osu.edu

## Z

### **Zehner, Susanne**

T U Dresden  
Inst Fur Genetik  
Zellescher Weg 19 Biologie  
Dresden, 01062  
GERMANY  
Tel: 49 351 4633 5407  
Fax: 49 351 4633 7725  
susanne.zehner@mailbox.tu-dresden.de

### **Zeng, Weiqing**

Michigan State Univ  
DOE - Plant Research Lab  
166 Plant Biology Bldg  
East Lansing, MI 48824-1312  
Tel: (517) 353-9182  
Fax: (517) 353-9168  
zengweiq@msu.edu

### **Zhang, Yan**

Rutgers Univ  
Plant Biology & Pathology Dept  
269 Foran Hall, 59 Dudley Road  
New Brunswick, NJ 08902  
Tel: (732) 932-9711x244  
Fax: (732) 932-9441  
yzhang@aesop.rutgers.edu

### **Zhang, Yuelin**

University of British Columbia  
Michael Smith Labs  
Rm 301, 2185 East Mall  
Vancouver, BC V6T 1Z4  
CANADA  
Tel: 01186 10 8072 8613  
zhangyuelin@nibs.ac.cn

### **Zhao, Youfu**

Univ of Illinois  
224 ERML, MC-051  
1201 W Gregory Dr  
Urbana, IL 61801  
Tel: (217) 265-9822  
Fax: (217) 244-1230  
zhao888@uiuc.edu

### **Zhou, Jian-Min**

Natl Inst of Biological Sciences  
Zhongguanchun Life Science Park  
#7 Life Science Road  
Chang Ping, Beijing, 102 206  
PEOPLES REP OF CHINA  
Tel: 86 10 8072 8594  
Fax: 86 10 8072 8867  
zhoujianmin@nibs.ac.cn

### **Zhu, Yun J.**

Hawaii Agriculture Research Center  
99-193 Aiea Heights Dr  
Aiea, HI 96701  
Tel: (808) 486-5376  
Fax: (808) 486-5020  
jzhu@harc-hspa.com

### **Zipfel, Cyril**

John Innes Centre  
Sainsbury Laboratory  
Colney Lane  
Norwich, NR4 7UH  
UNITED KINGDOM  
Tel: 44 1603 450 434  
Fax: 44 1603 450 011  
cyril.zipfel@sainsbury-laboratory.ac.uk

## IS-MPMI BOARD OF DIRECTORS

### *President*

**FEDERICO SANCHEZ**  
Univ of Mexico  
Phone: +52 777 329 1653  
Fax: +52 777 3313 6600  
E-mail: federico@ibt.unam.mx

### *President-Elect*

**FELICE CERVONE**  
Univ La Sapienza  
Phone: +39 6 4991 2641  
Fax: +39 6 4991 2446  
E-mail: felice.cervone@uniroma1.it

### *Immediate Past President, ex officio*

**PIERRE J. DE WIT**  
Wageningen Univ  
Phone: +31 317 483 130  
Fax: +31 317 483 412  
E-mail: pierre.dewit@wur.nl

### *Secretary*

**MARIA HARRISON**  
Boyce Thompson Institute  
Phone: +1.607.254.6472  
Fax: +1.607.254.6779  
E-mail: mjh78@cornell.edu

### *Treasurer*

**MATTEO LORITO**  
Univ Degli Studi Di Napoli  
Phone: +39 81 775 5142  
Fax: +39 81 775 5320  
E-mail: lorito@unina.it

### *Immediate Past Treasurer*

**GARY STACEY**  
Univ of Missouri  
Phone: +1.573.884.4752  
Fax: +1.573.882.0588  
E-mail: staceyg@missouri.edu

### *Editor-in-Chief, Molecular Plant-Microbe Interactions*

**JONATHAN D. WALTON**  
Michigan State Univ  
Phone: +1.517.353.4885  
Fax: +1.517.353.9168  
E-mail: walton@msu.edu

### *Editor-in-Chief, IS-MPMI Reporter*

**SOPHIEN KAMOUN**  
Sainsbury Laboratory  
Phone: +44(0)1603 450410  
E-mail: sophien.kamoun@tsl.ac.uk

### *Director*

**PETER DODDS**  
CSIRO  
Phone: +61 2 6246 5039  
Fax: +61 2 6246 5000  
E-mail: peter.dodds@csiro.au

### *Director*

**KIM E. HAMMOND-KOSACK**  
IACR  
Phone: +44 1582 763 133 x2240  
Fax: +44 1582 715 009  
E-mail: kim.hammond-kosack@bbsrc.ac.uk

### *Director*

**SHENG YANG HE**  
Michigan State Univ  
Phone: +1.517.353.9181  
Fax: +1.517.353.9168  
E-mail: hes@msu.edu

### *Director*

**EV A KONDOROSI**  
CNRS - Inst Sciences Vegetal  
Phone: +33 1 6982 3791  
Fax: +33 1 6982 3695  
E-mail: eva.kondorosi@isv.cnrs-gif.fr

### *Staff Contact, ex officio*

**AMY L. HOPE**  
IS-MPMI  
Phone: +1.651.454.7250  
Fax: +1.651.454.0766  
E-mail: ahopec@scisoc.org